

Content Indexing

- 01.Index
- 02.Change List
- 03.Block Diagram
- 04.Power tree
- 05.System Power
- 06.RK3368 Power
- 07.RK3368 OSC/PMUIO Controler
- 08.RK3368 DDR Controler
- 09.RK3368 FLASH/SDMMC Controler
- 10.RK3368 USB/ADC/HUB Controler
- 11.RK3368 SDIO/UART/I2S/DVP/CSI
- 12.RK3368 Display Interface
- 13.RK3368 GMAC/GPIO | eMMC
- 14.LPDDR3
- 15.eDP+TP
- 16.USB/TF Port
- 17.HDMI Port
- 18.WIFI+BT
- 19.RJ45
- 20.FAN/LED/IR
- 21.Edge-Fingers

Power by Geekbuying.com			
Project:	Geekbox		
File:	Index		
Date:	Wednesday, November 18, 2015	Rev:	V1.23
Designed by:	Lu	Sheet:	1 of 21

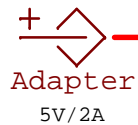
Version	Date	Author	Change Note	Approved
V0.1	20150710	Lu	First edit	gouwa
V1.23	20150929	Lu	1. Use RK808-B PMIC as power solution 2. Redefine the edge-fingers, MXM3.1 as the reference 3. Add the HDMI CEC support	gouwa

Power by Geekbuying.com			
Project:	Geekbox		
File:	Change List		
Date:	Wednesday, November 18, 2015	Rev:	V1.23
Designed by:	Lu	Sheet:	2 of 21

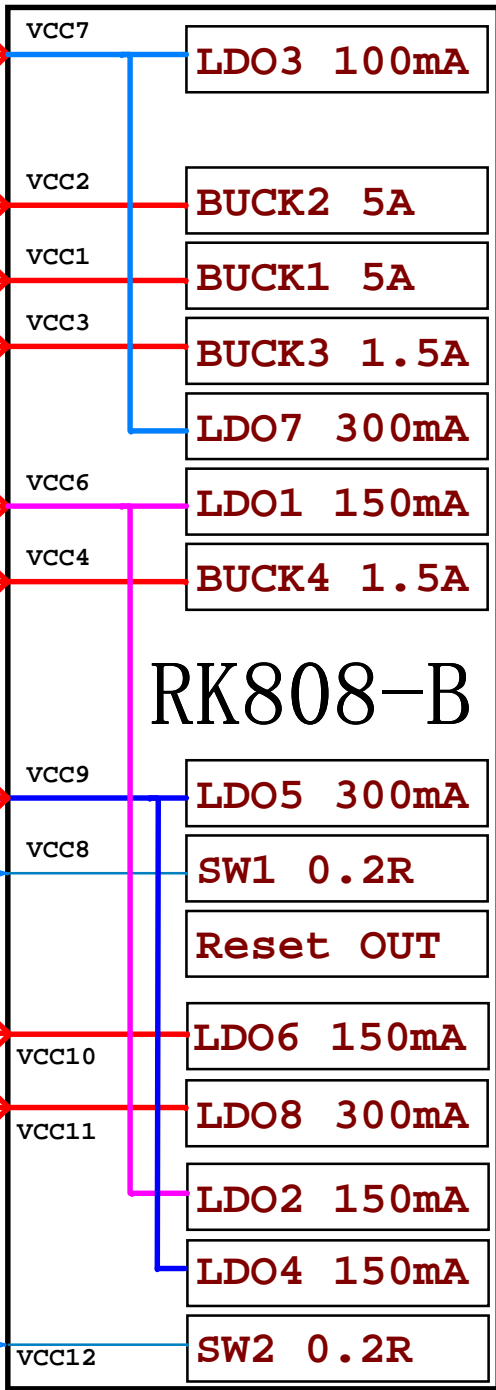
geekbox.tv

Power by Geekbuying.com			
Project:	Geekbox		
File:	Block Diagram		
Date:	Wednesday, November 18, 2015	Rev:	V1.23
Designed by:	Lu	Sheet:	3 of 21

Power tree



VCC_SYS



Current limiting IC

VDD_10	RK3368 PLL
	RK3368 USB PHY
	RK3368 DDR PLL
	RK3368 PMUVDD

VDD_LOG	Logic
	GPU

VDD_CPU	CPU Core
---------	----------

VCC_DDR	RK3368 DDR_Ctrl
1.25V	DDR Device

VCC_18	RK3368 SAR-ADC	MXM3
1.8V	RK3368 USB PHY	WiFi

VCC18_FLASH	FLASH IO
1.8V	EMMC

VCC_IO	RK3368 IO Suply
3.3V	RK3368 USB PHY
	Ethernet MAC
	EMMC
	MXM3

VCCIO_SD	RK3368 SDIO-Ctrl
----------	------------------

VCC_SD	SD Card Power
--------	---------------

RESET	RESET
-------	-------

VDD10_LCD	MIPI CSI
	RK3368 HDMI
	RK3368 LCDC

VCC18_LCD	RK3368 HDMI
	RK3368 LCDC

VCC18_DVP	VCC18_DVP_EXT
-----------	---------------

VCC33_LCD	RK3368 LCDC
-----------	-------------

VCCA_18	MXM3
---------	------

VCC_LAN	Ethernet PHY
---------	--------------

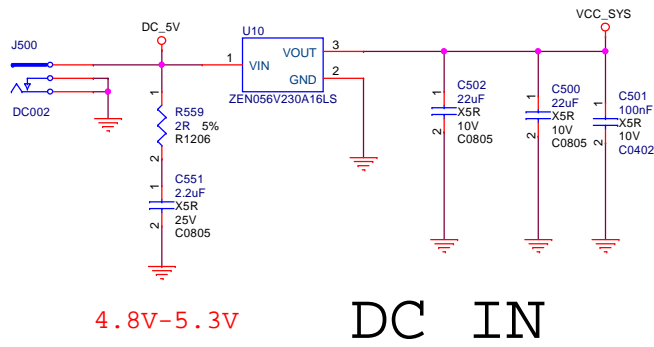
VCC_HOST_5V	MXM3
	USB HOST
	USB HOST

Power up Timing

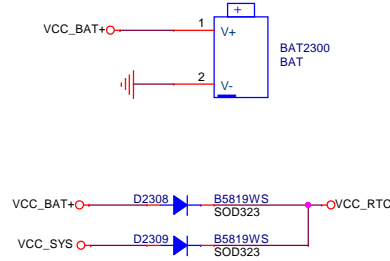
PowerName	RK808-B Channel	timer 2mS	Default voltage	Normal voltage
VDD_10	LDO3	Slot:1	1.0V	1.0V
VDD_CPU	BUCK1	Slot:2	1.1V	DVFS
VDD_LOG	BUCK2	Slot:3	1.1V	DVFS
VCC_DDR	BUCK3	Slot:3	1.25V	1.25V
VCC_18	LDO7	Slot:3	1.8V	1.8V
VCC18_FLASH	LDO1	Slot:4	1.8V	1.8V
VCC_IO	BUCK4	Slot:4	3.3V	3.3V
VCCIO_SD	LDO5	Slot:5	3.3V	1.8V or 3.3V
VCC_SD	SW1	Slot:5	3.3V	3.3V
Reset		16*2mS+50mS		
VDD10_LCD	LDO6	OFF	0V	1.0V
VCC18_LCD	LDO8	OFF	0V	1.8V
VCC33_LCD	LDO2	OFF	0V	3.3V
VCCA_18	LDO4	OFF	0V	1.8V
VCC_LAN	SW2	OFF	0V	3.3V

MXM3

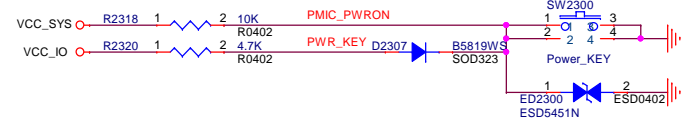
VCC18_DVP_EXT



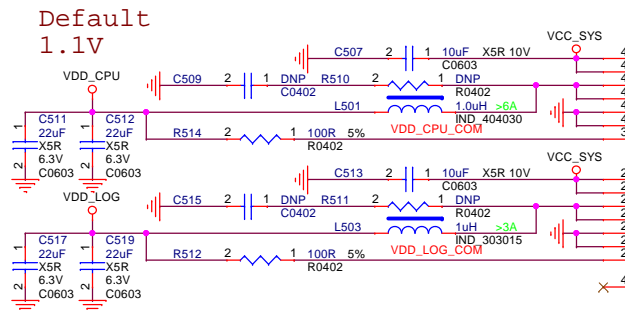
Battery



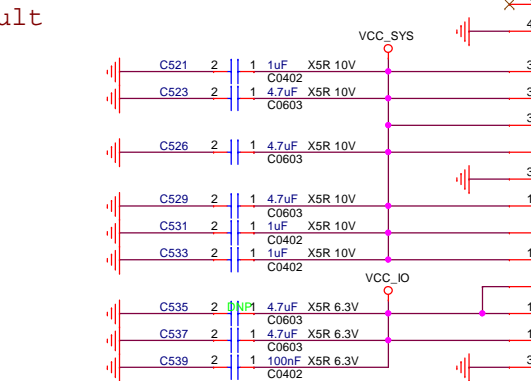
Power KEY(Power on/off)



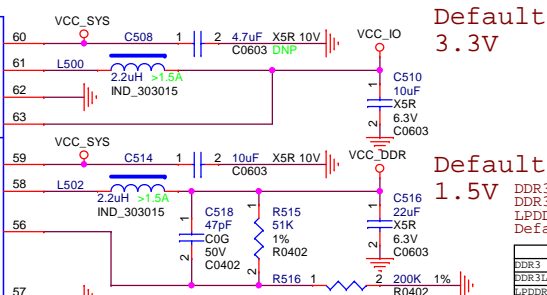
Default 1.1V



Default 1.1V



Default 3.3V

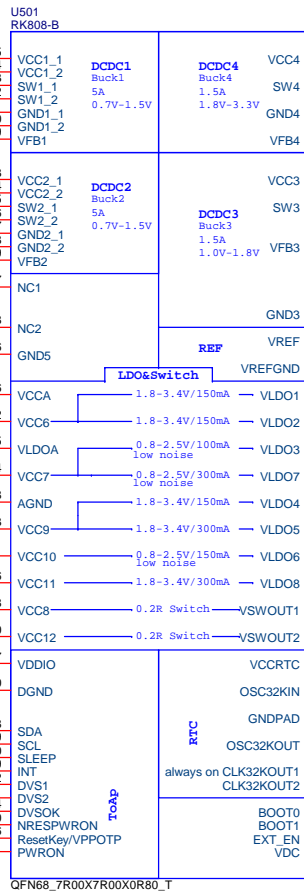
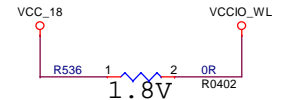


Default 1.5V

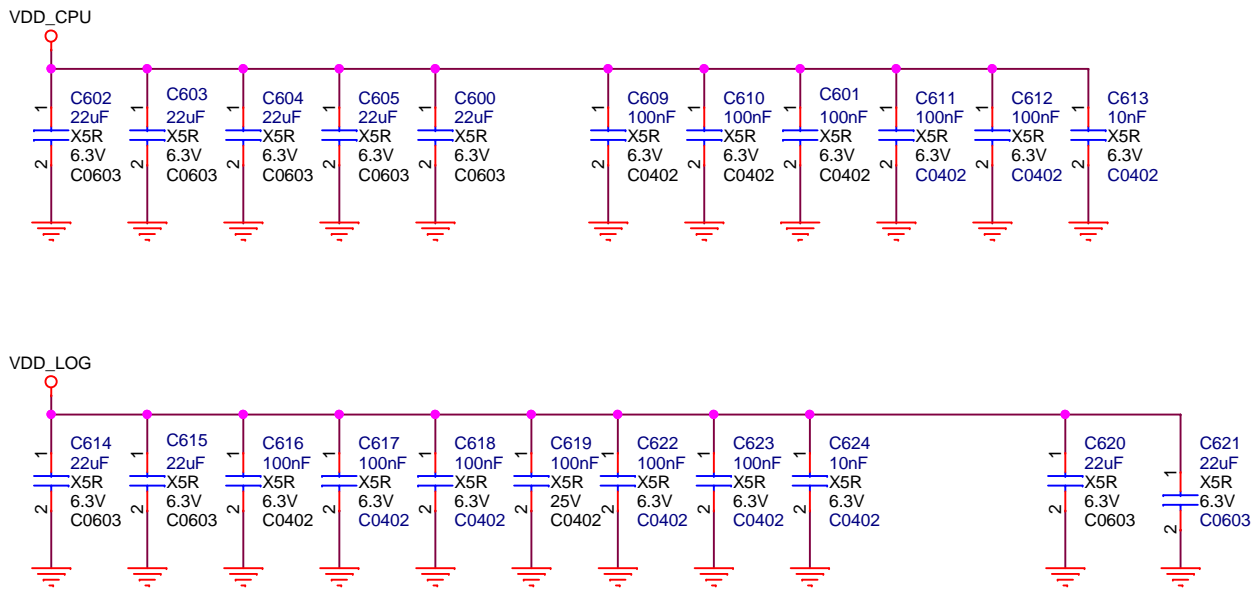
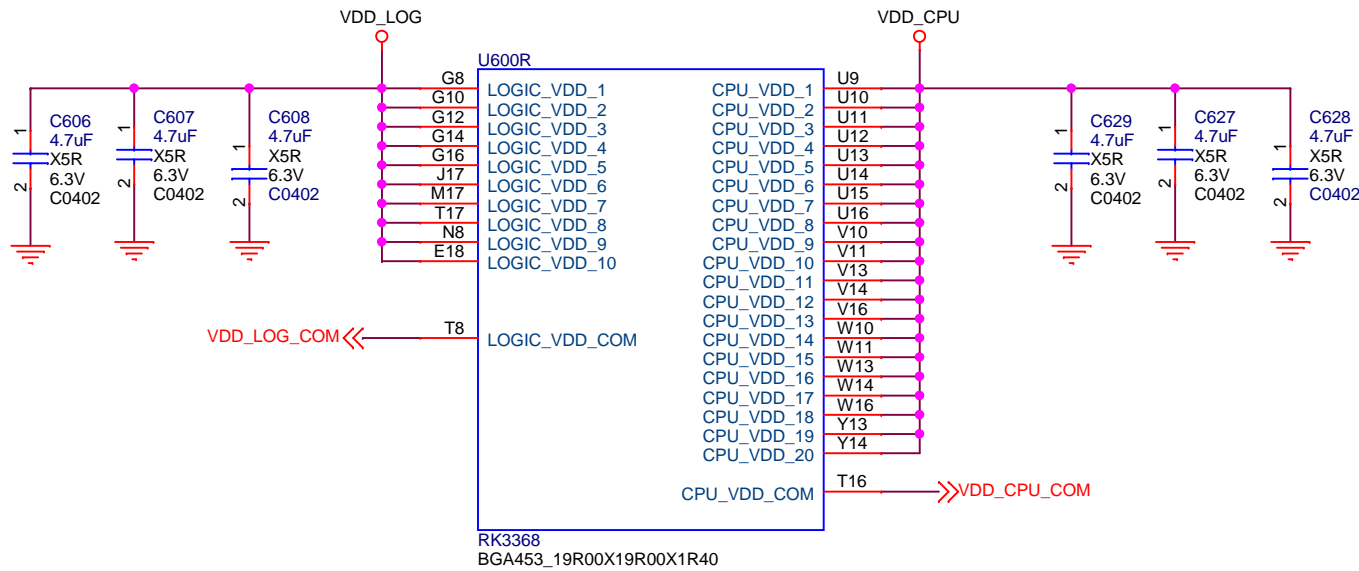
	R515	R516
DDR3	100K	200K
DDR3L	43K	120K
LPDDR	61K	200K

- PMU_VDC
- PMU_VDC
- VDD_LOG_COM
- VDD_CPU_COM
- RESET
- I2C0_SCL
- I2C0_SDA
- PMIC_INT
- PMIC_SLEEP
- 32K_OUT1
- 32K_OUT2

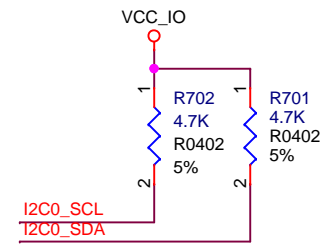
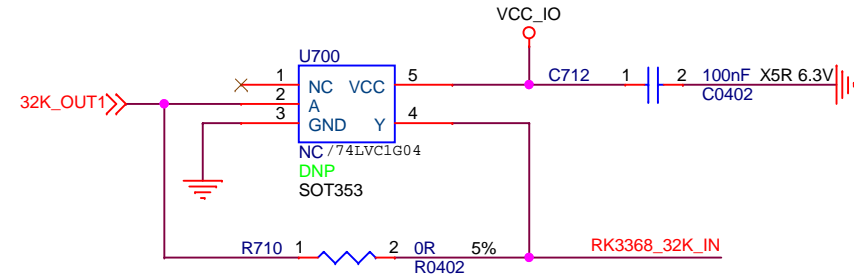
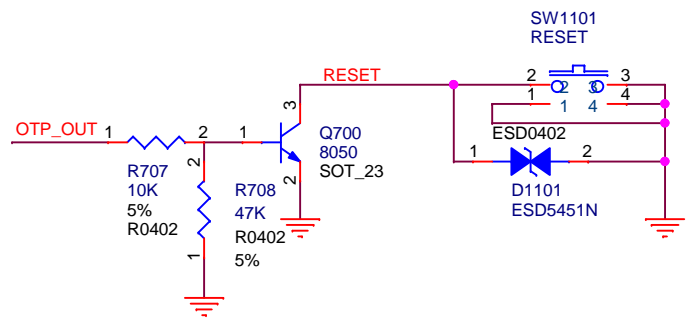
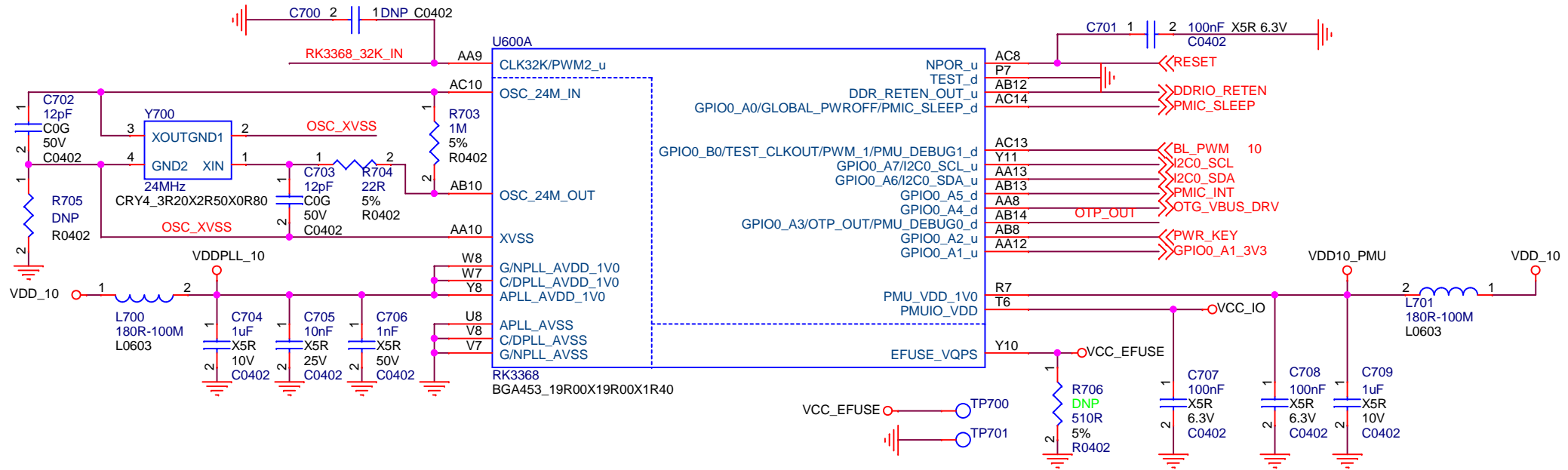
VCCIO_WL



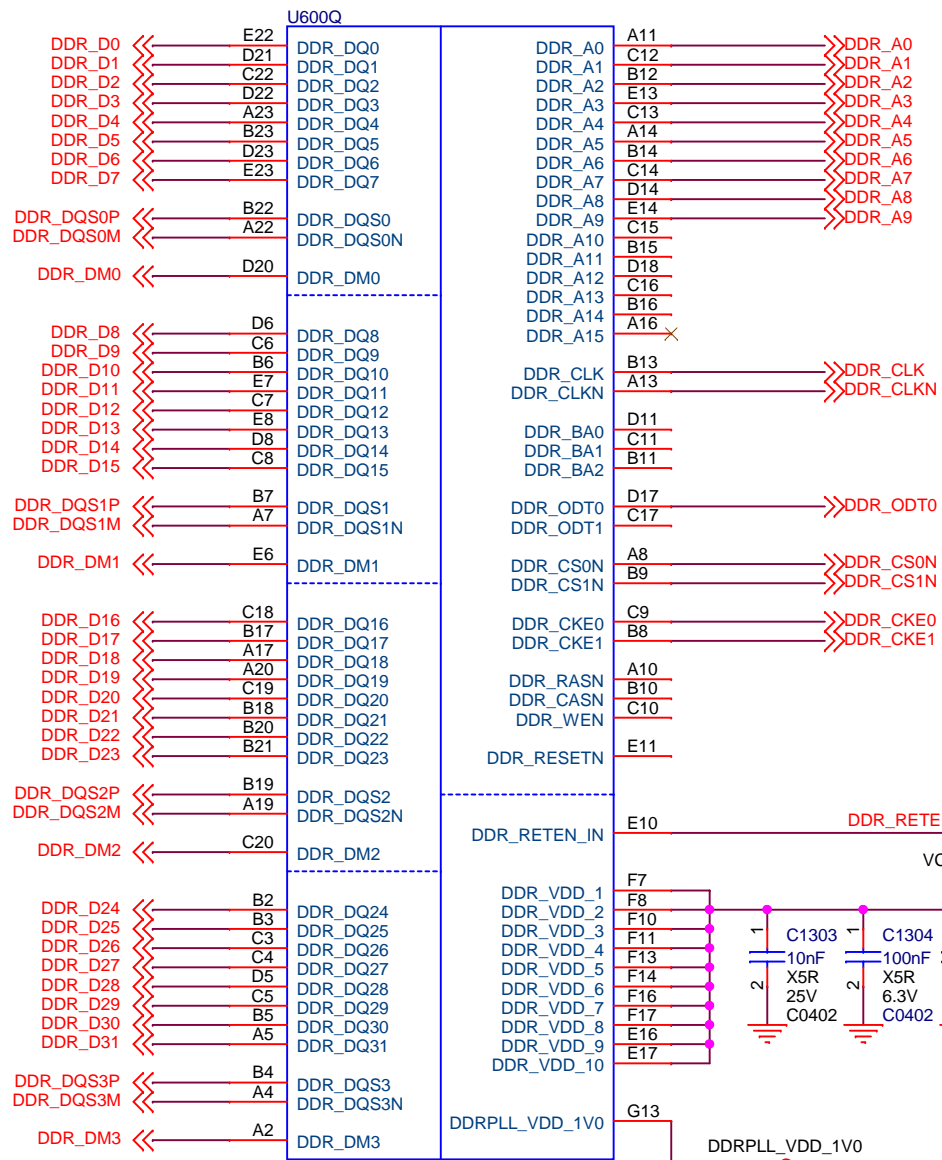
Power by Geekbuying.com			
Project:	Geekbox		
File:	System Power		
Date:	Wednesday, November 18, 2015	Rev:	V1.23
Designed by:	Lu	Sheet:	5 of 21



Power by Geekbuying.com			
Project:	Geekbox		
File:	RK3368 Power		
Date:	Wednesday, November 18, 2015	Rev:	V1.23
Designed by:	Lu	Sheet:	6 of 21

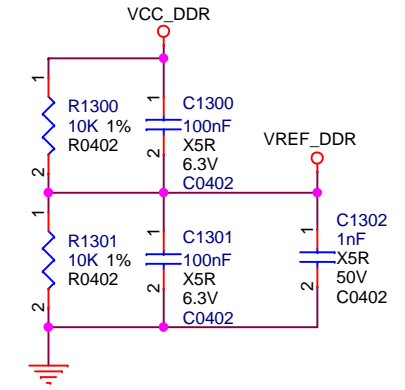


Power by Geekbuying.com			
Project:	Geekbox		
File:	RK3368 OST/PMU10 Controller		
Date:	Wednesday, November 18, 2015	Rev:	V1.23
Designed by:	Lu	Sheet:	7 of 21

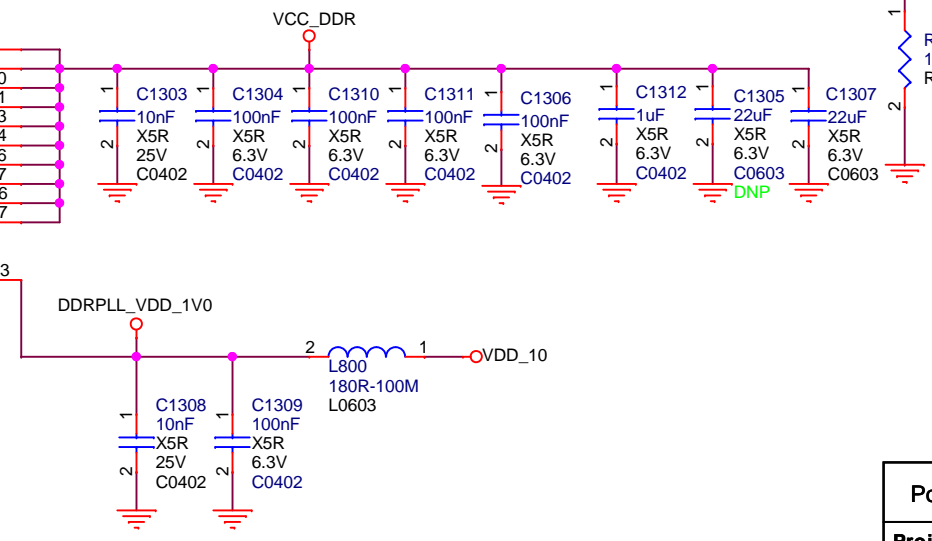
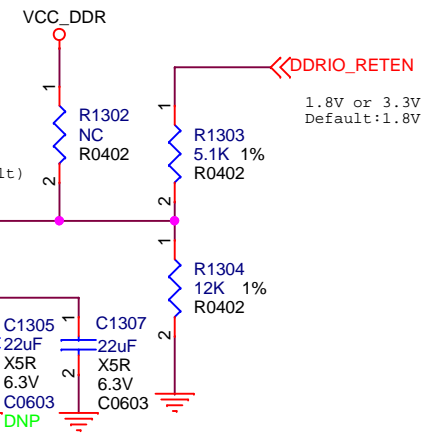


RK3368
BGA453_19R00X19R00X1R40

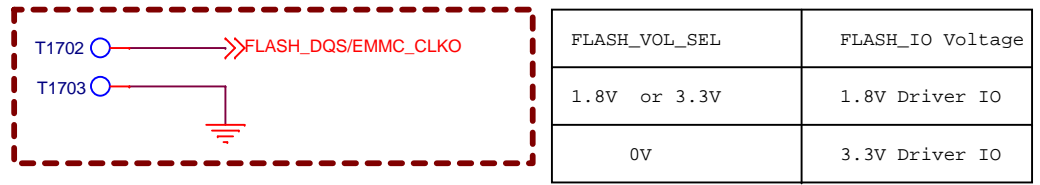
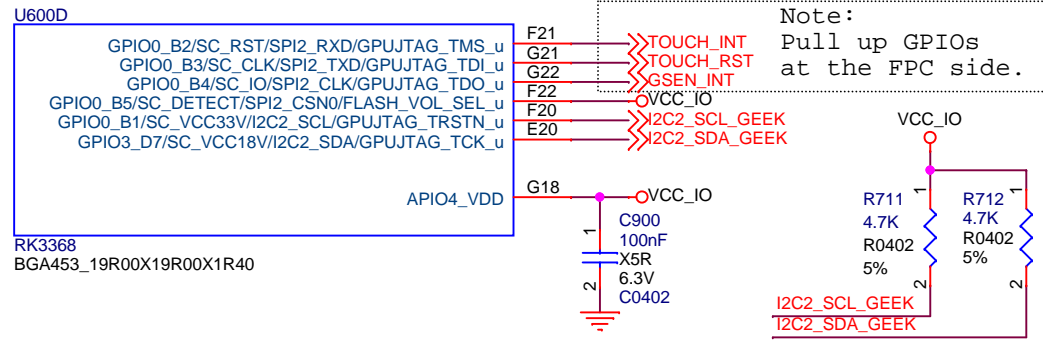
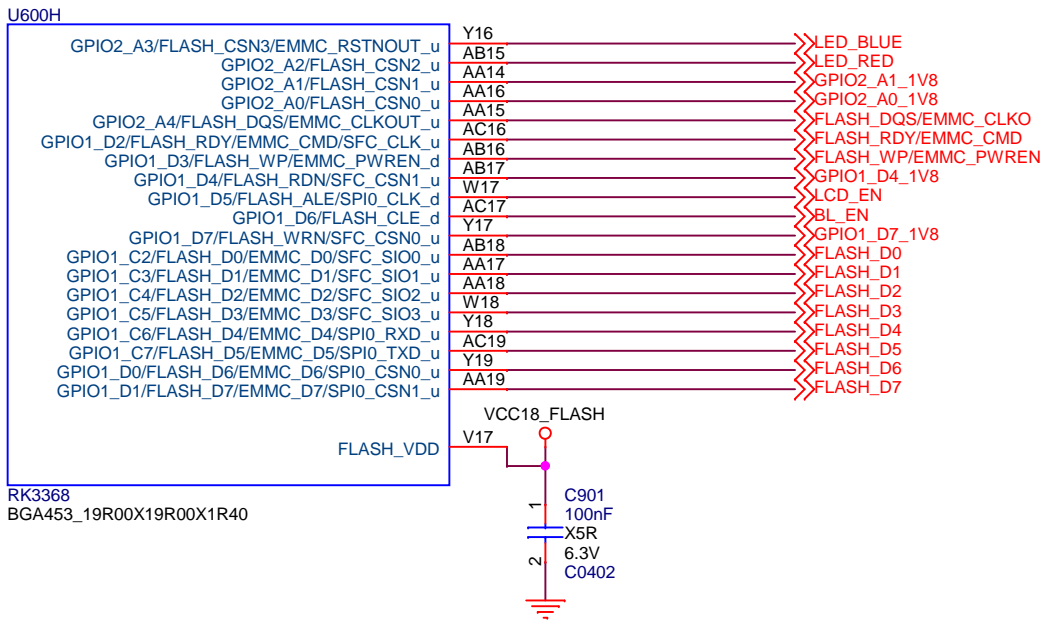
VCC_IO=1.8V	R1303	R1304	VCC_IO=3.3V	R1303	R1304
DDR3	5.1K	27K	DDR3	12K	10K
DDR3L	5.1K	16K	DDR3L	10K	6.8K
LPDDR2/3	5.1K	12K	LPDDR2/3	8.2K	5.1K



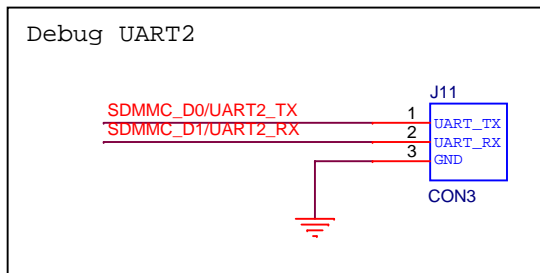
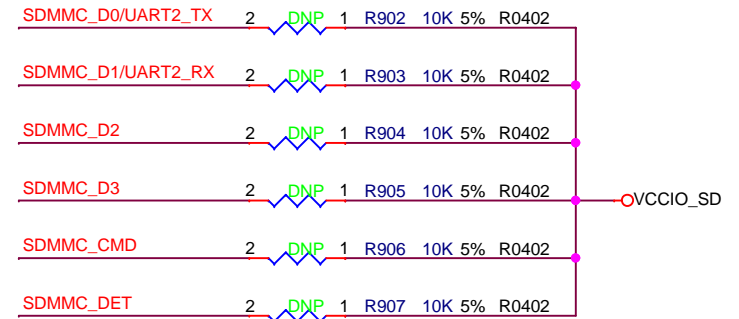
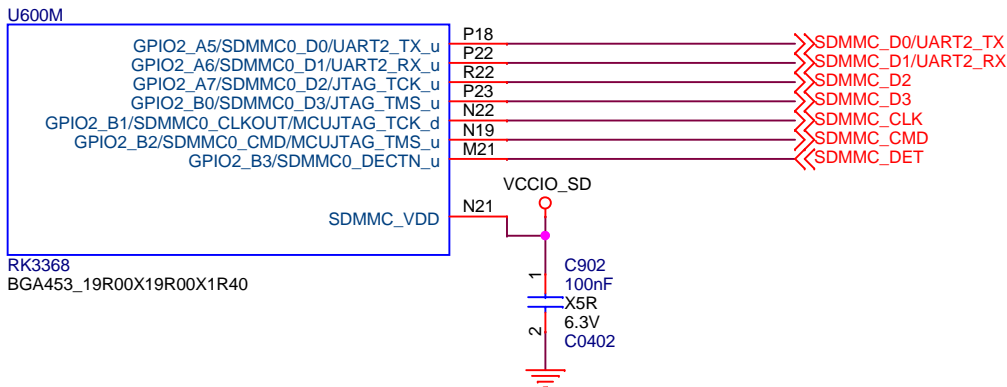
DDR_RETEN:
DDR3=1.5V
DDR3L=1.35V
LPDDR3=1.25V(Default)
LPDDR2=1.25V



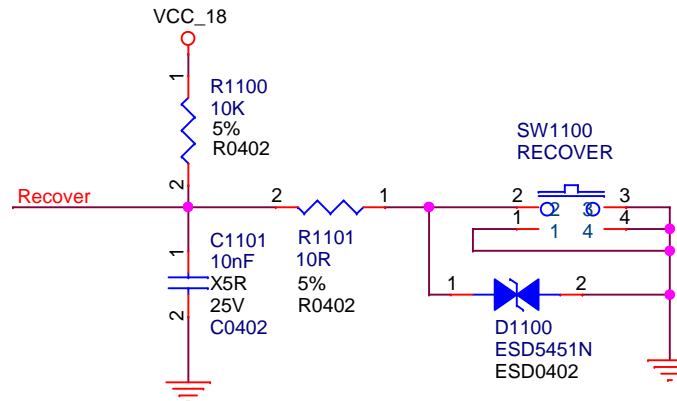
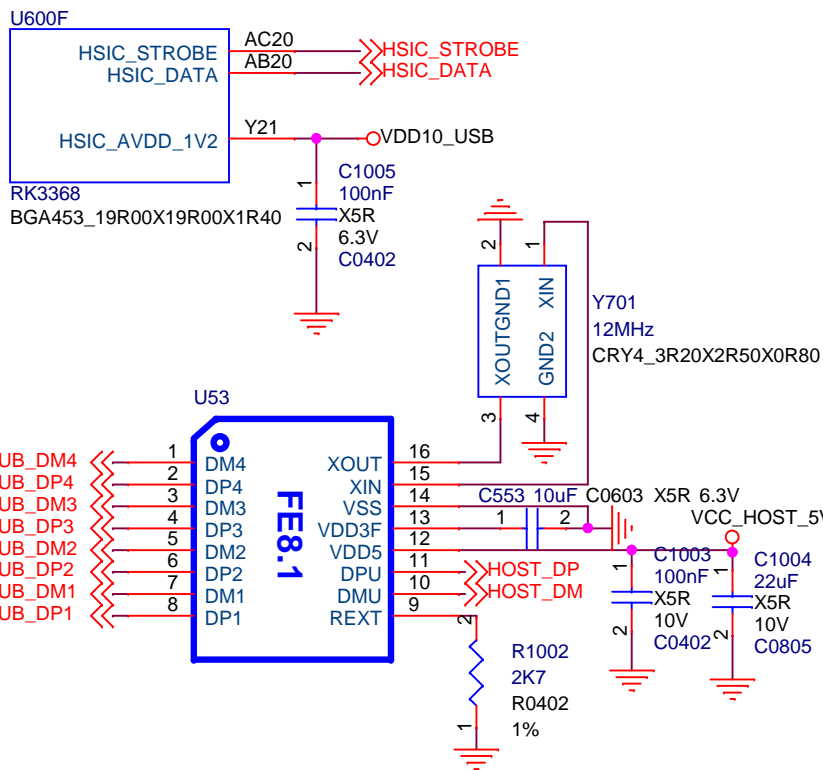
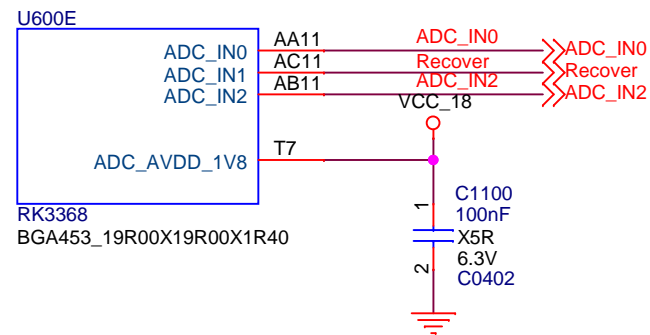
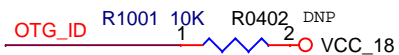
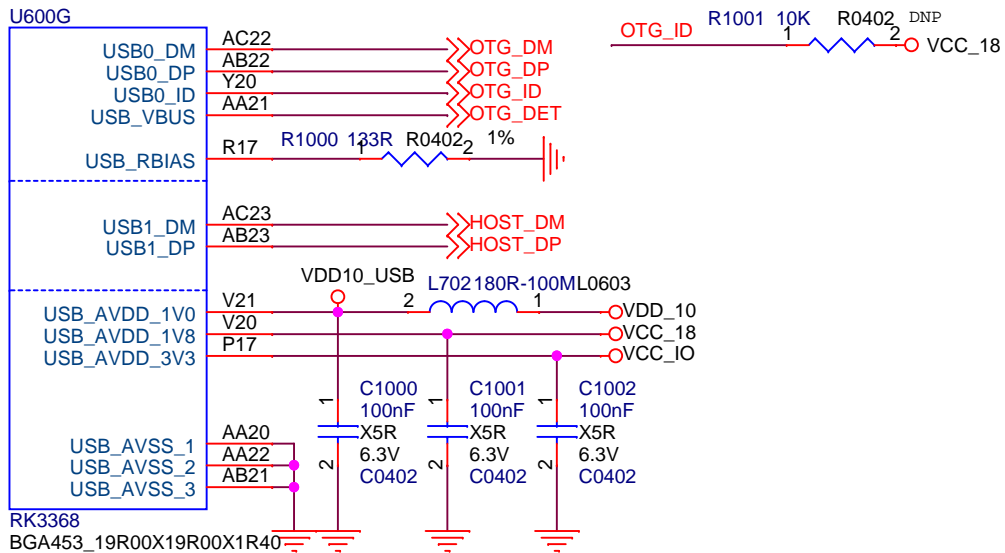
Power by Geekbuying.com			
Project:	Geekbox		
File:	RK3368 DDR Controller		
Date:	Wednesday, November 18, 2015	Rev:	V1.23
Designed by:	Lu	Sheet:	8 of 21



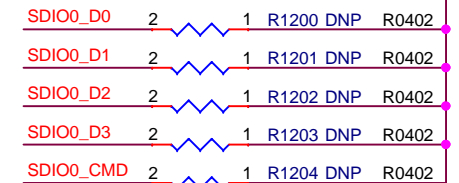
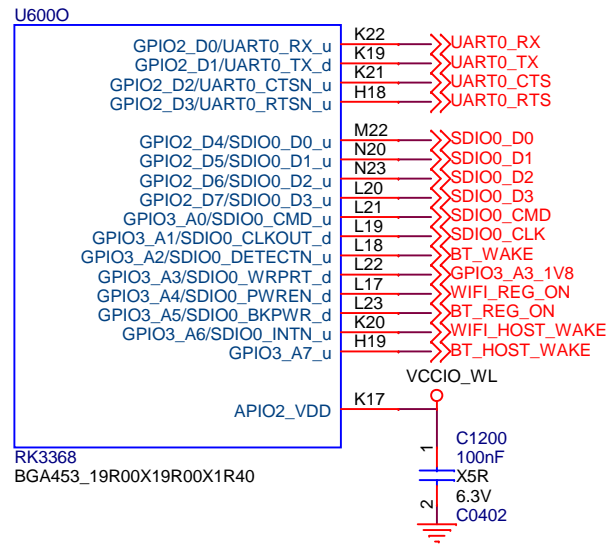
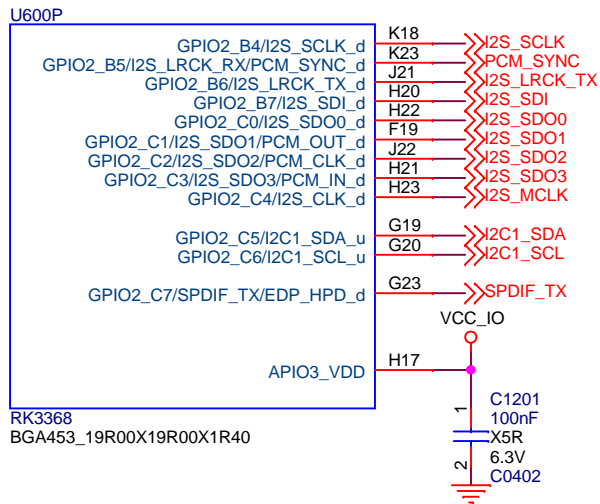
Note:
Reserve PAD for eMMC Update.



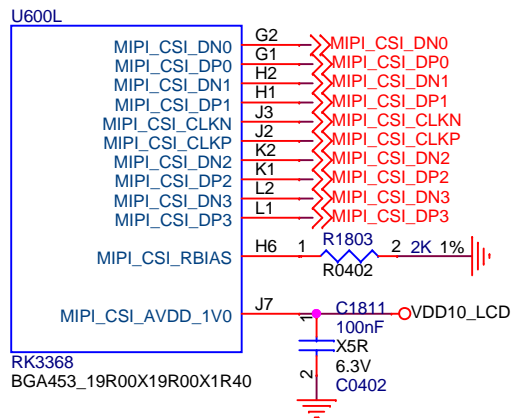
Power by Geekbuying.com			
Project:	Geekbox		
File:	RK3368 FLASH/SDMMC Controller		
Date:	Wednesday, November 18, 2015	Rev:	V1.23
Designed by:	Lu	Sheet:	9 of 21



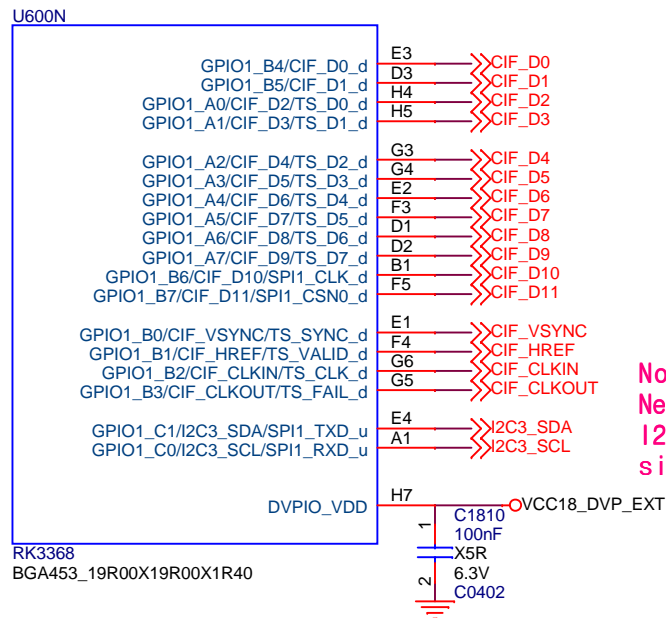
Power by Geekbuying.com			
Project:	Geekbox		
File:	RK3368 USB/HSIC/ADC-HUB		
Date:	Wednesday, November 18, 2015	Rev:	V1.23
Designed by:	Lu	Sheet:	10 of 21



MIPI CSI



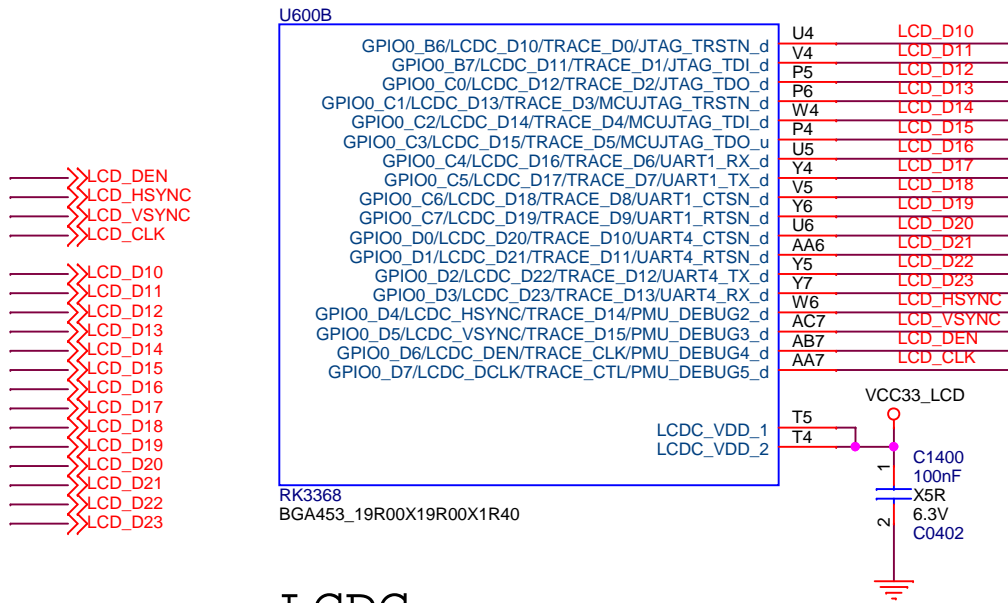
CIF



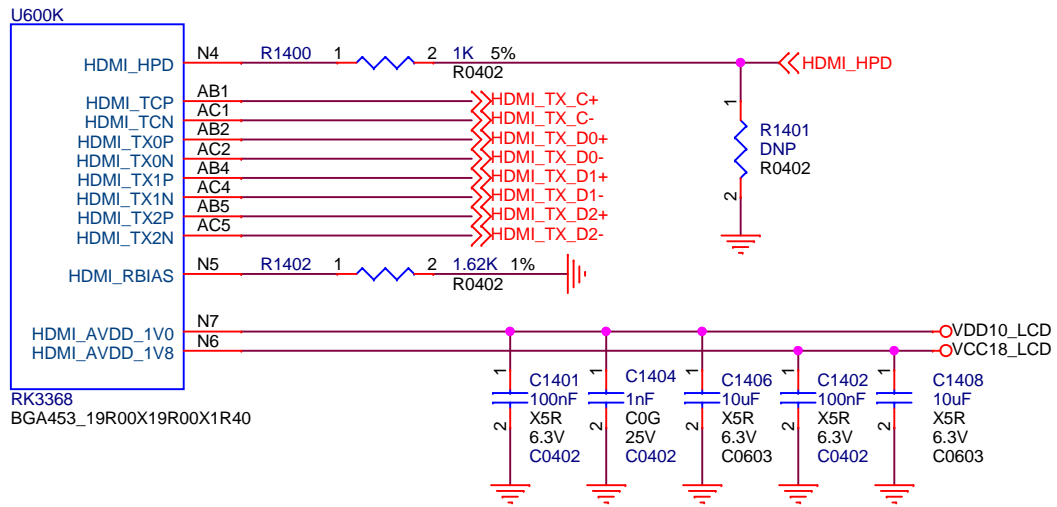
Note:
Need to pull up the I2C Bus at the FPC side.

Power by Geekbuying.com

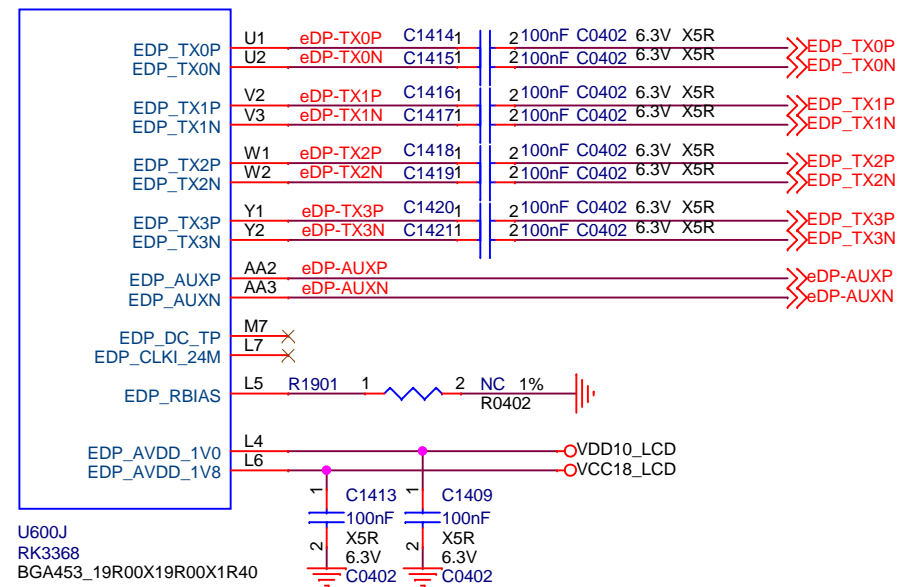
Project:	Geekbox		
File:	RK3368 SDIO0/UART0/I2S/MIPI CSI/CIF		
Date:	Wednesday, November 18, 2015	Rev:	V1.23
Designed by:	Lu	Sheet:	11 of 21



LCDC

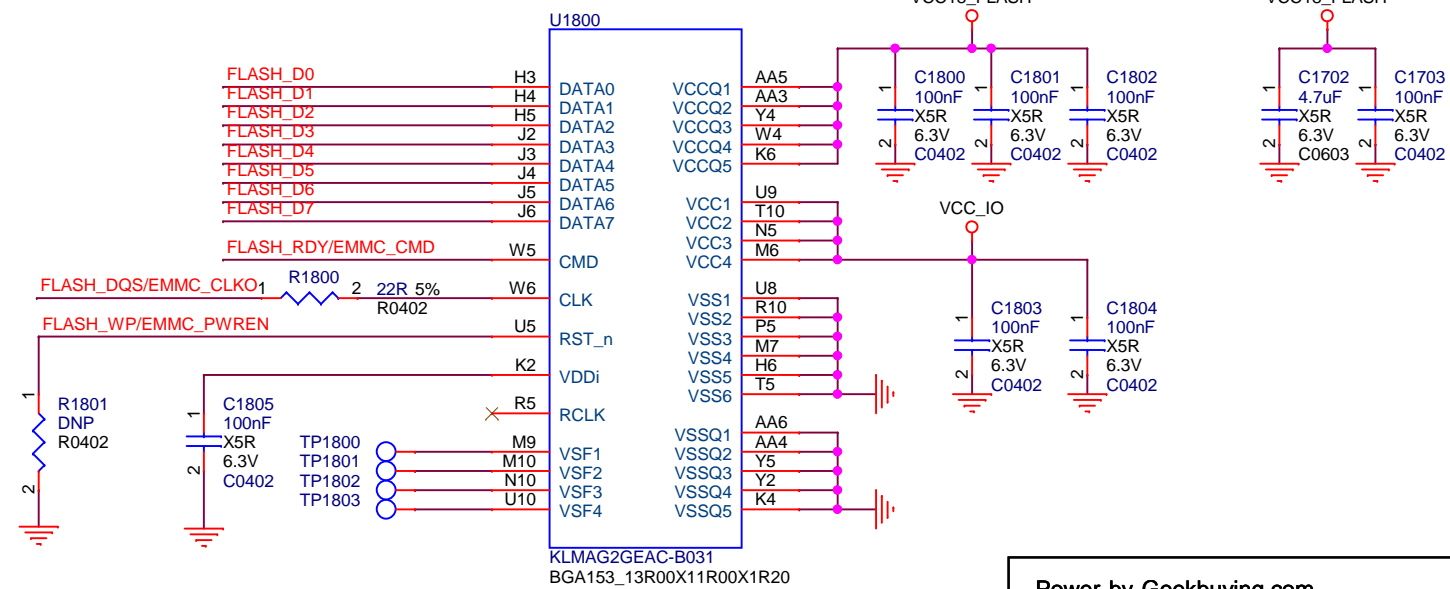
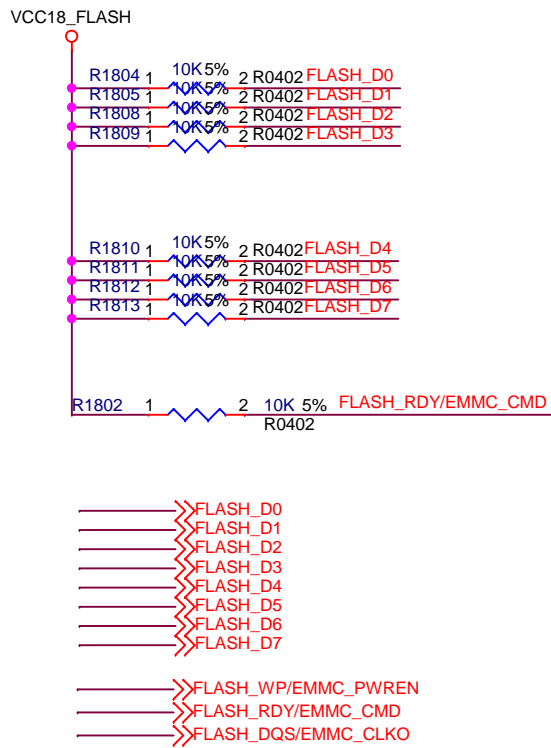
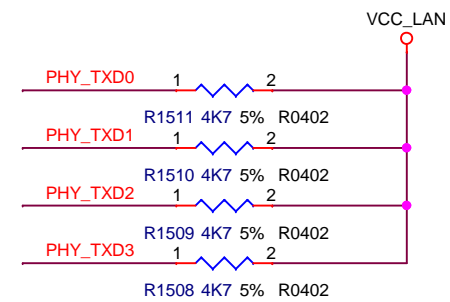
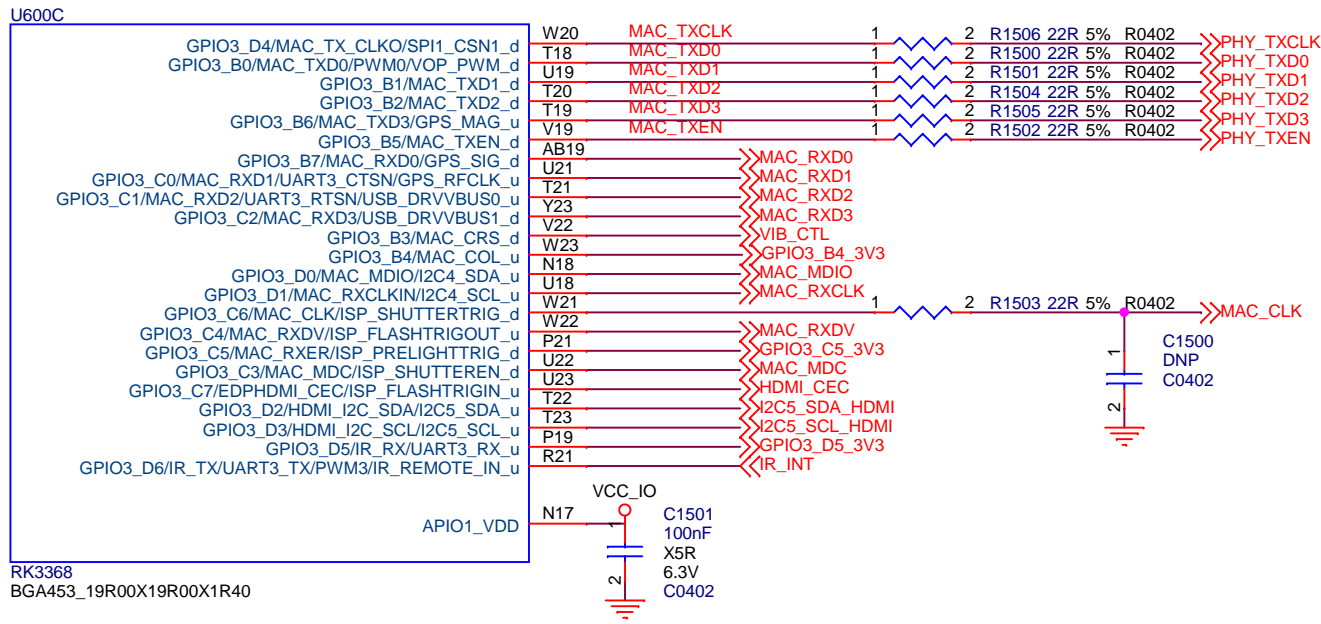


HDMI OUT

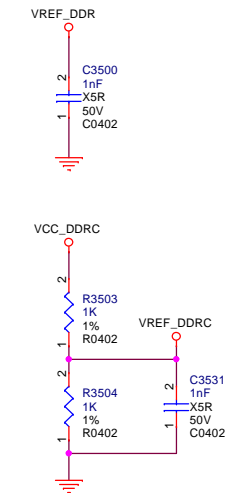
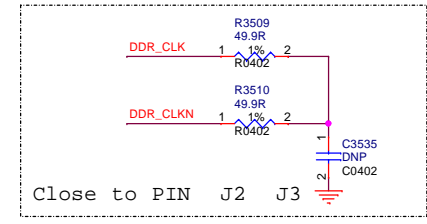
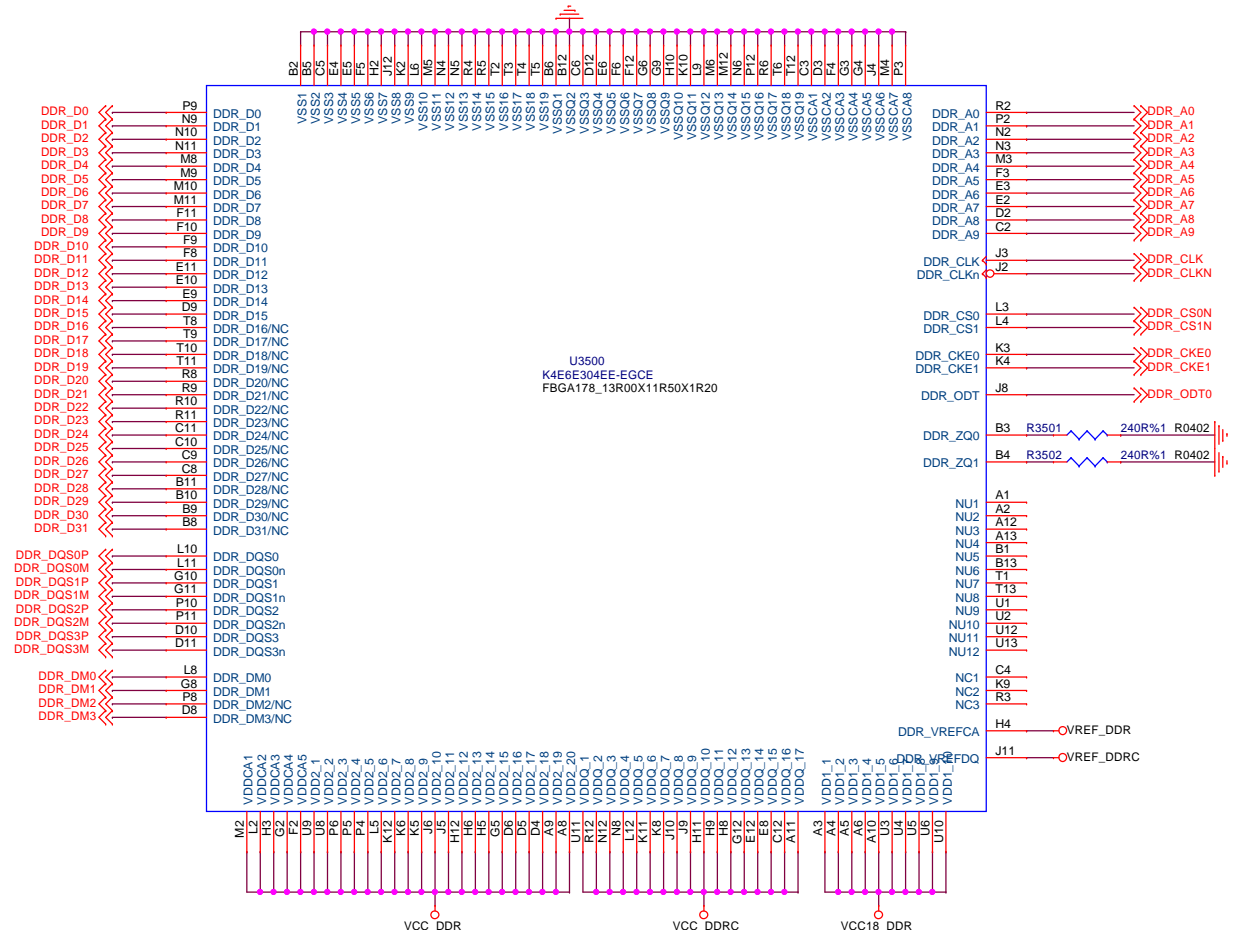


EDP

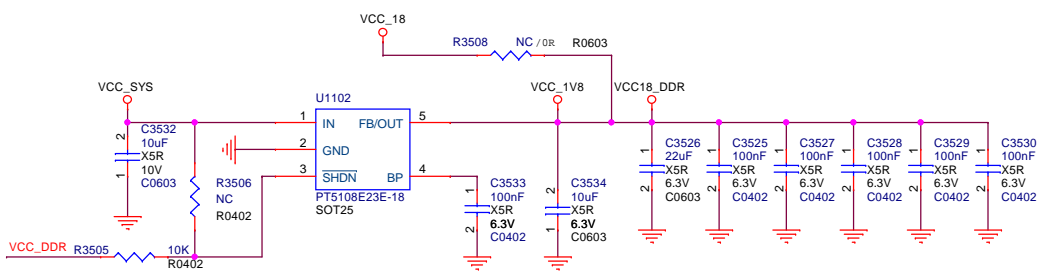
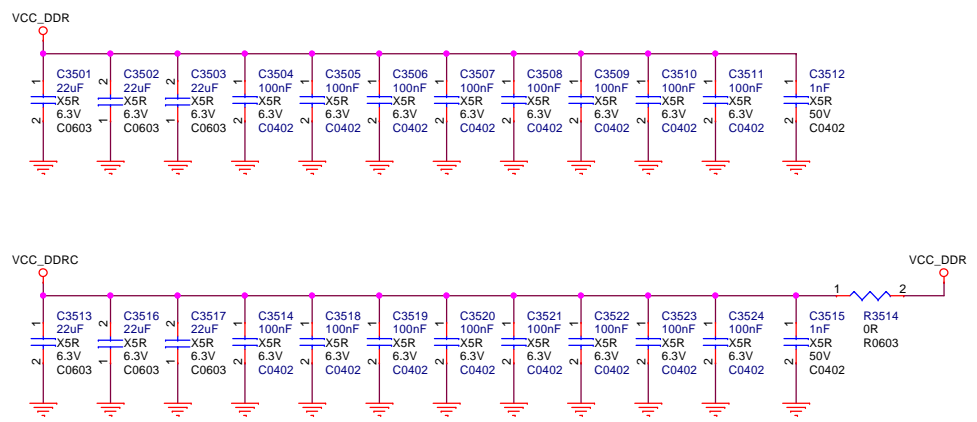
Power by Geekbuying.com			
Project:	Geekbox		
File:	RK3368 Display Interface		
Date:	Wednesday, November 18, 2015	Rev:	V1.23
Designed by:	Lu	Sheet:	12 of 21



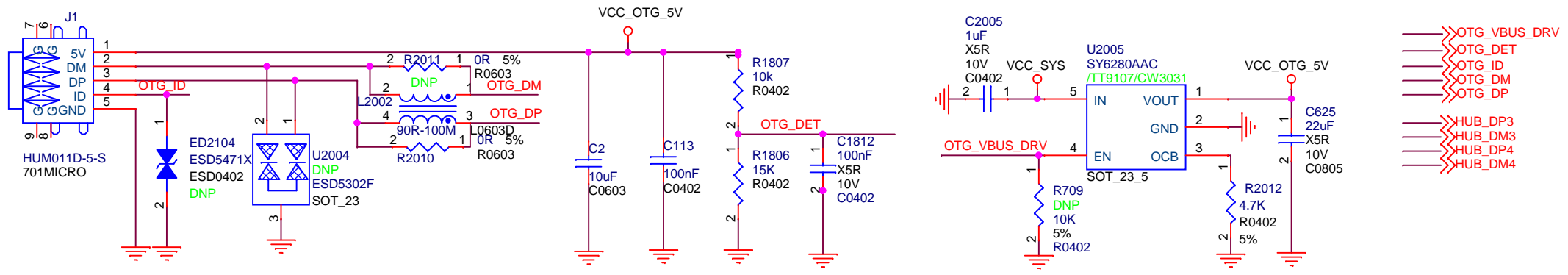
Power by Geekbuying.com			
Project:	Geekbox		
File:	RK3368 EthernetMAC/GPIO/EMMC		
Date:	Wednesday, November 18, 2015	Rev:	V1.23
Designed by:	Lu	Sheet:	13 of 21



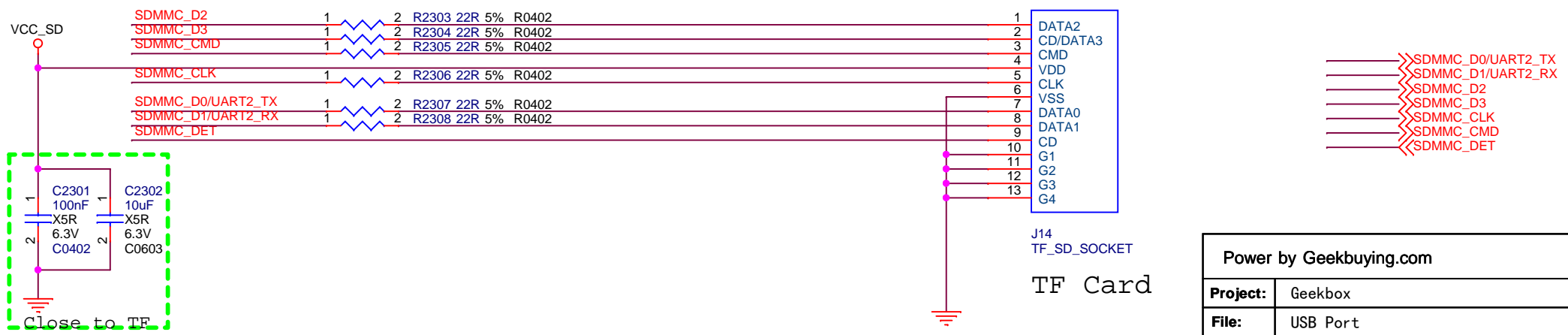
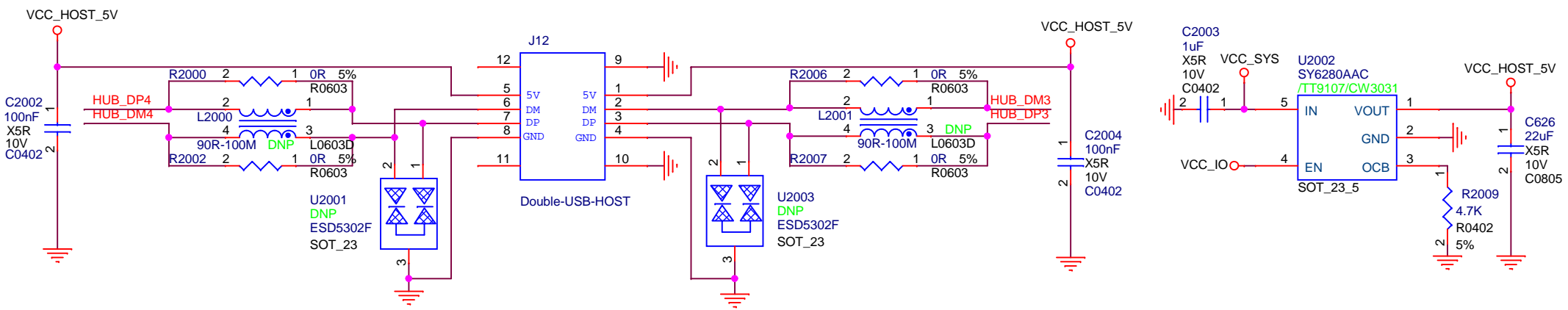
LPDDR3 FILTER



Power by Geekbuying.com			
Project:	Geekbox		
File:	LPDDR3		
Date:	Wednesday, November 18, 2015	Rev:	V1.23
Designed by:	Lu	Sheet:	14 of 21

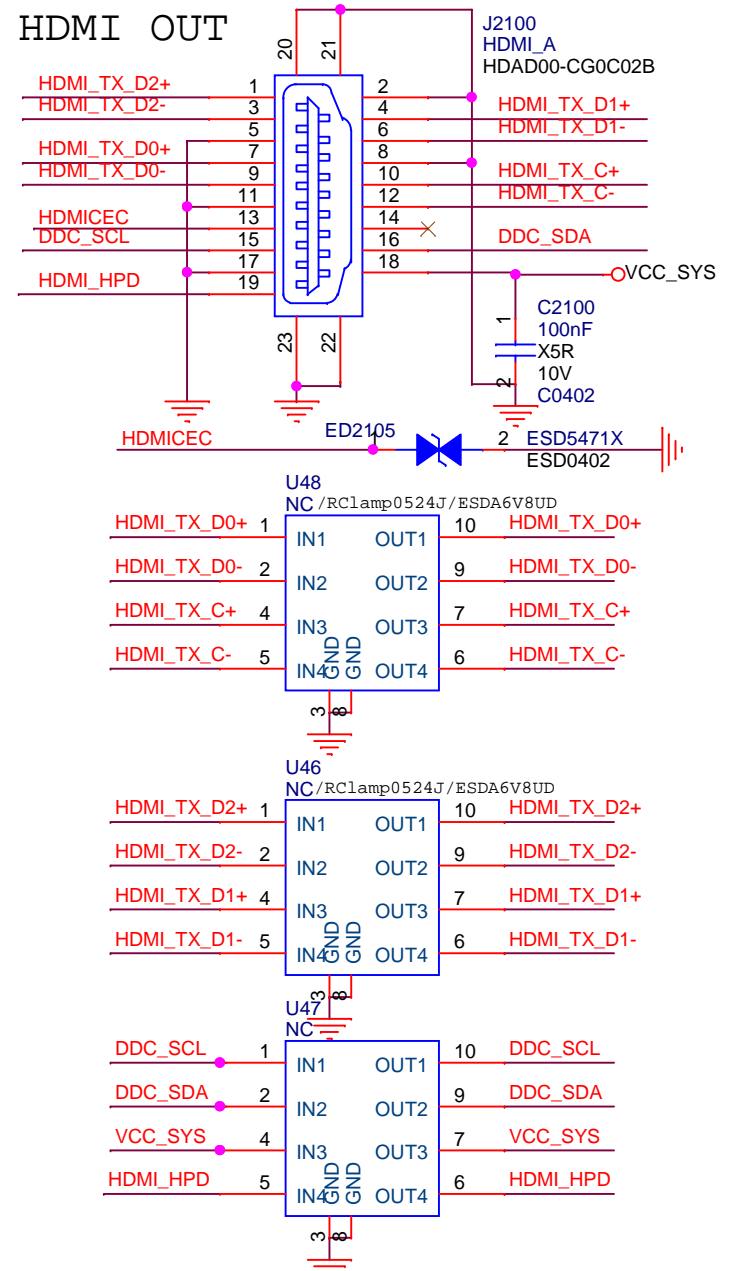
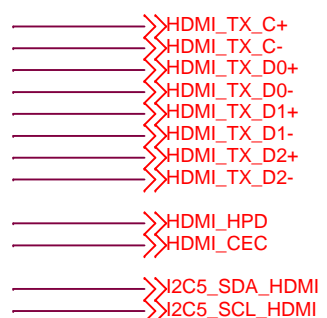
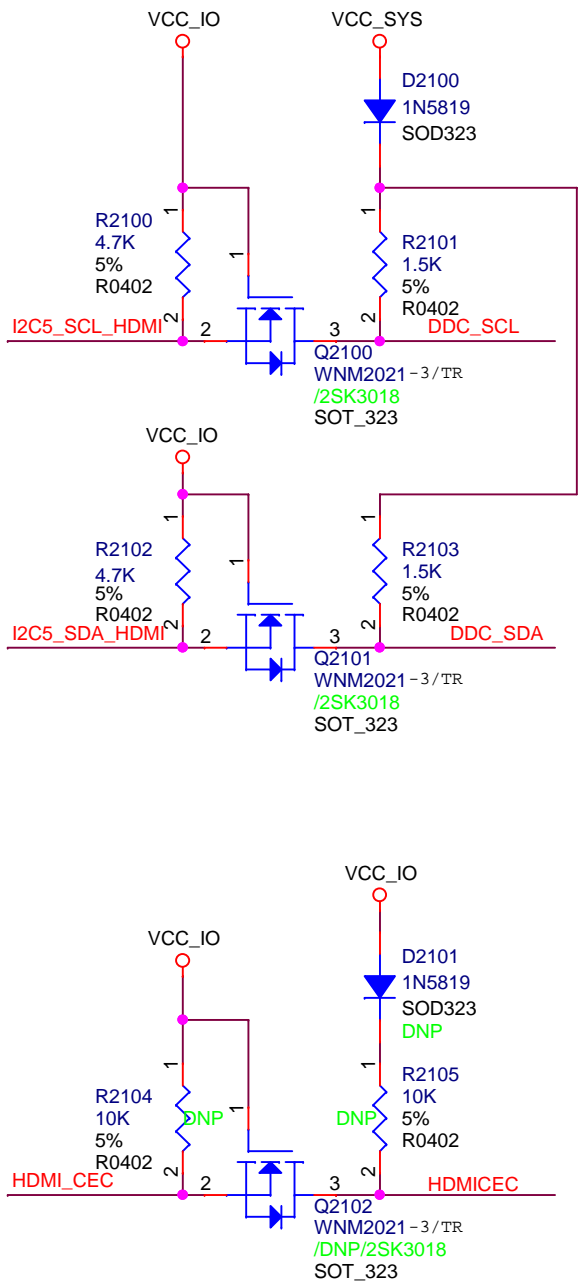


- >>> OTG_VBUS_DRV
- >>> OTG_DET
- >>> OTG_ID
- >>> OTG_DM
- >>> OTG_DP
- >>> HUB_DP3
- >>> HUB_DM3
- >>> HUB_DP4
- >>> HUB_DM4



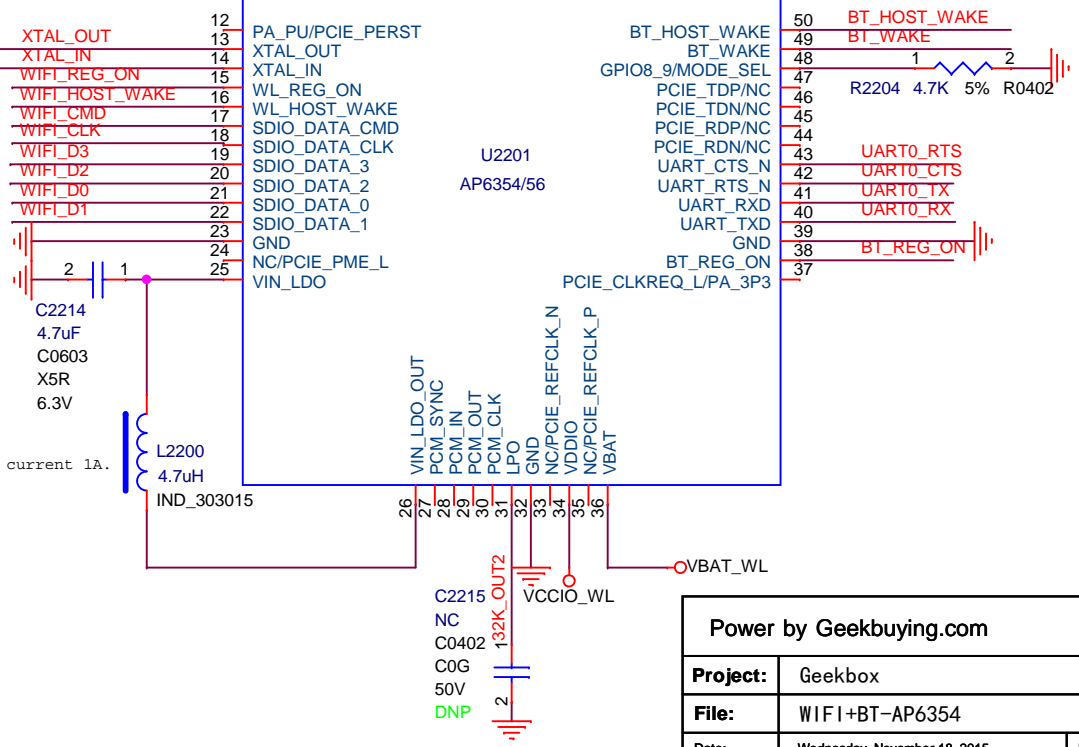
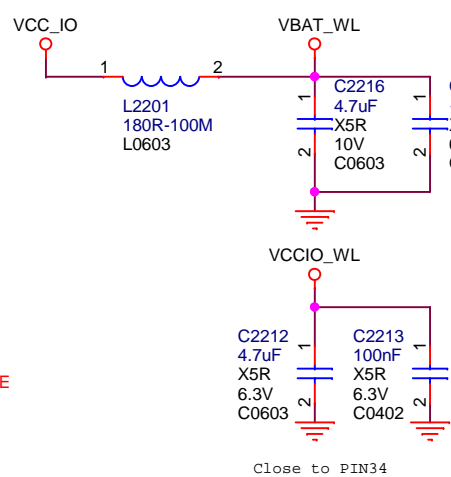
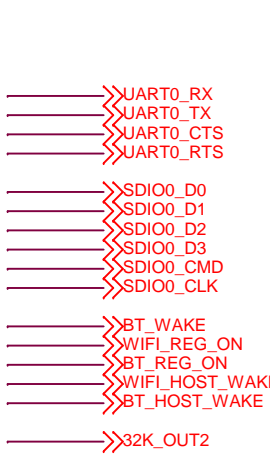
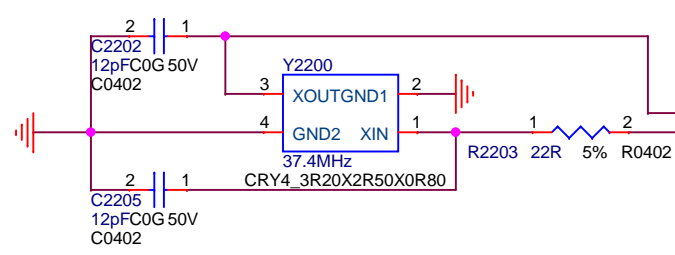
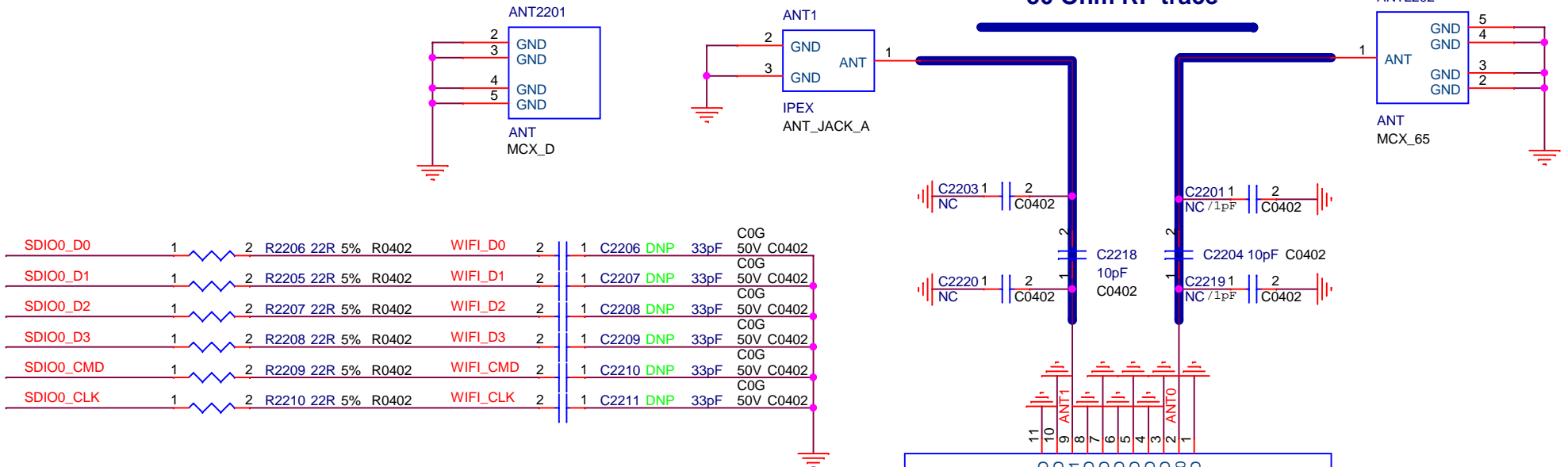
- >>> SDMMC_D0/UART2_TX
- >>> SDMMC_D1/UART2_RX
- >>> SDMMC_D2
- >>> SDMMC_D3
- >>> SDMMC_CLK
- >>> SDMMC_CMD
- >>> SDMMC_DET

Power by Geekbuying.com			
Project:	Geekbox		
File:	USB Port		
Date:	Wednesday, November 18, 2015	Rev:	V1.23
Designed by:	Lu	Sheet:	16 of 21

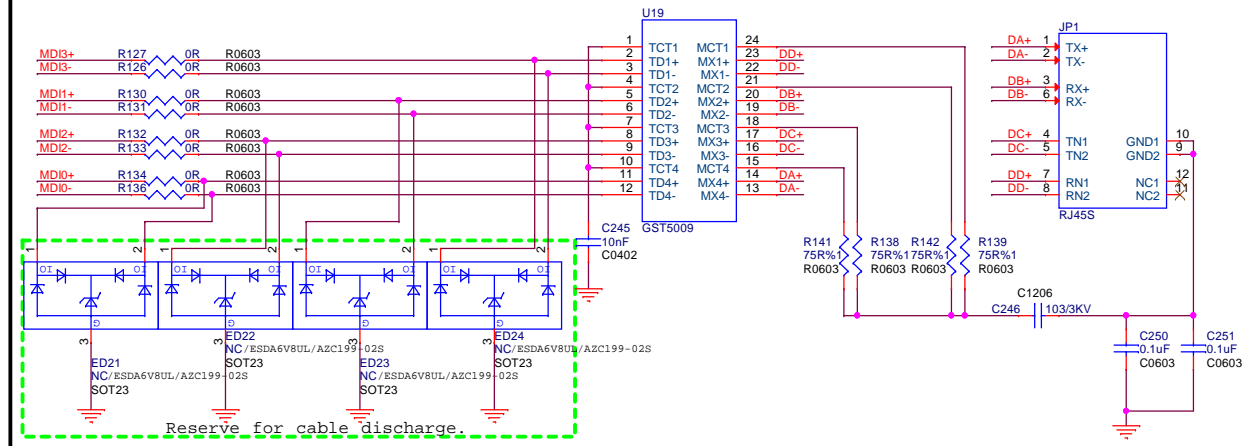
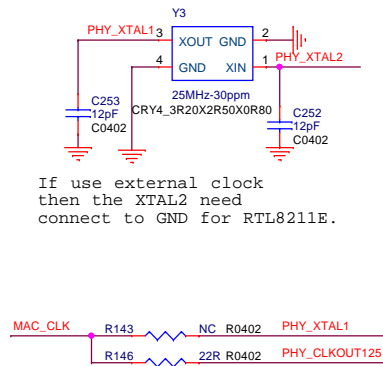
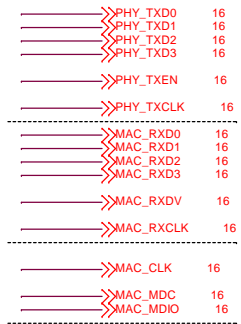


Power by Geekbuying.com			
Project:	Geekbox		
File:	HDMI Out Port		
Date:	Wednesday, November 18, 2015	Rev:	V1.23
Designed by:	Lu	Sheet:	17 of 21

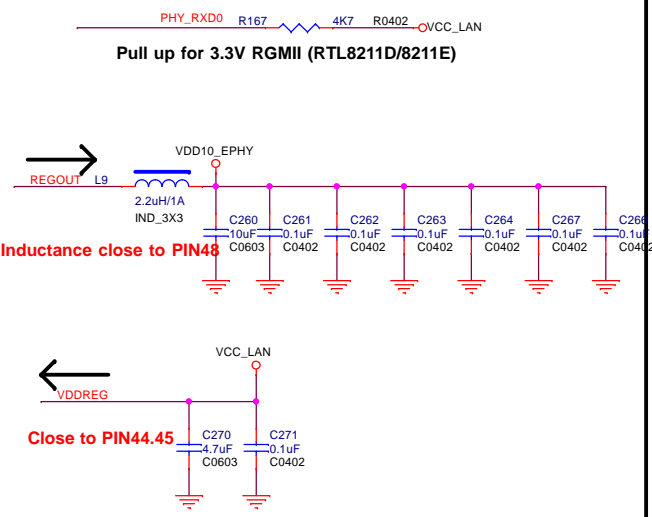
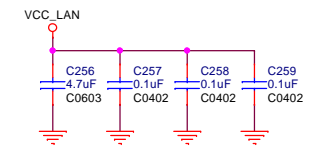
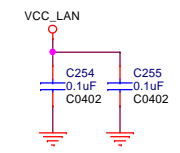
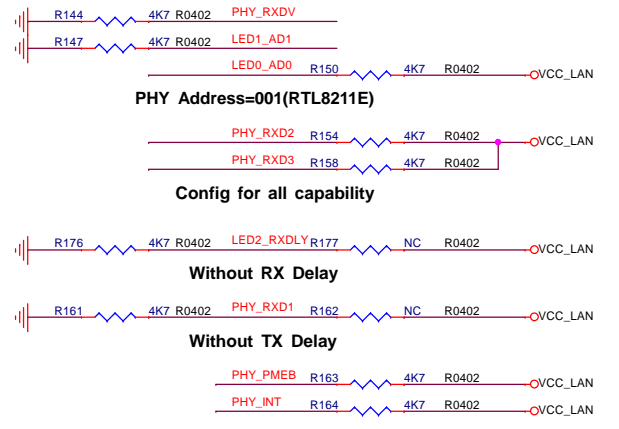
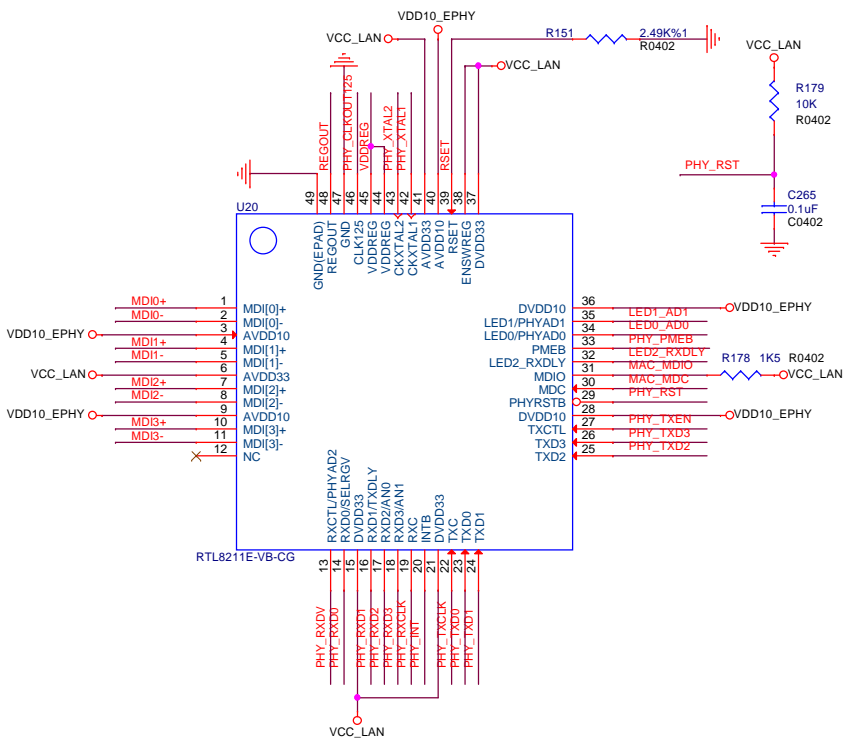
50 Ohm RF trace



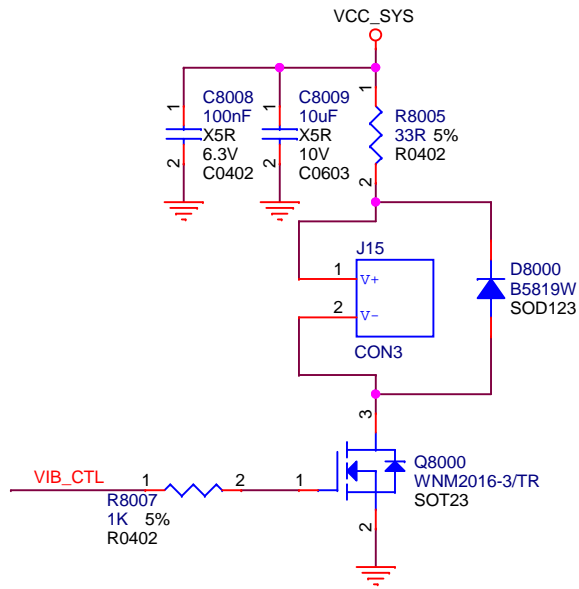
Power by Geekbuying.com			
Project:	Geekbox		
File:	WIFI+BT-AP6354		
Date:	Wednesday, November 18, 2015	Rev:	V1.23
Designed by:	Lu	Sheet:	18 of 21



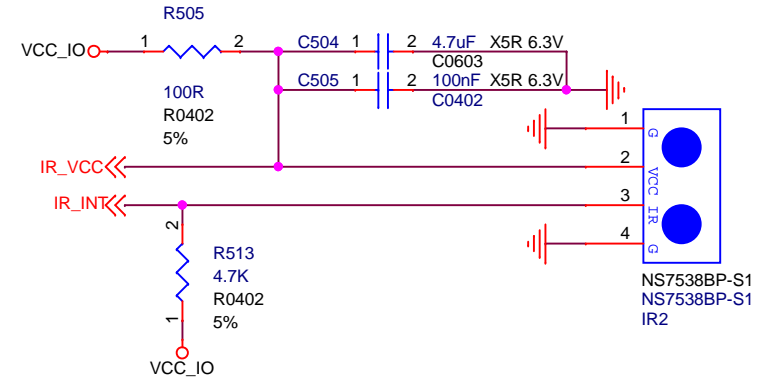
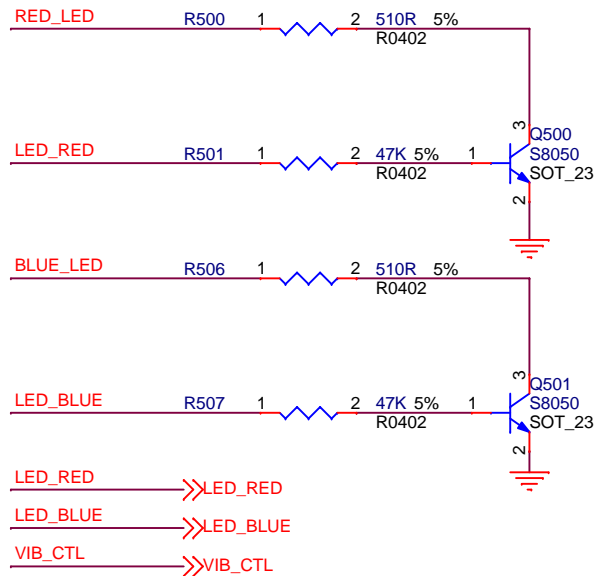
Pin38: Connect ENSWREG to AVDD33 to enable Switching regulator or connect ENSWREG to GND to disable Switching regulator.



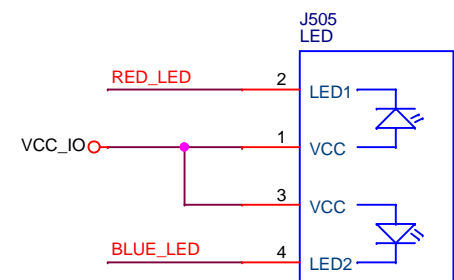
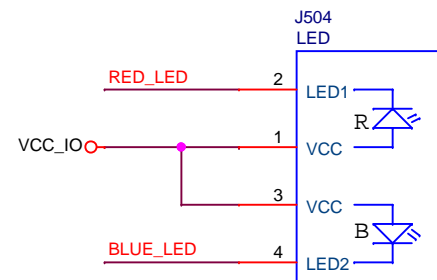
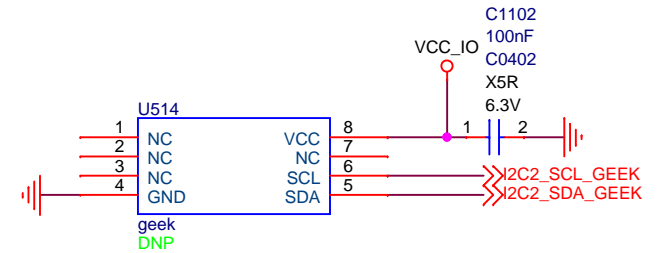
Power by Geekbuying.com			
Project:	Geekbox		
File:	RJ45-10/100/1000M		
Date:	Wednesday, November 18, 2015	Rev:	V1.23
Designed by:	Lu	Sheet:	19 of 21



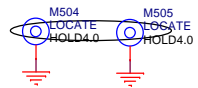
FAN



IR Receiver



Power by Geekbuying.com			
Project:	Geekbox		
File:	FAN/LED/IR		
Date:	Wednesday, November 18, 2015	Rev:	V1.23
Designed by:	Lu	Sheet:	20 of 21



Power by Geekbuying.com			
Project:	Geekbox		
File:	Edge-Fingers		
Date:	Wednesday, November 18, 2015	Rev:	V1.23
Designed by:	Lu	Sheet:	21 of 21