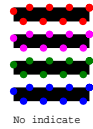


CONTENT INDEXING

- 01. INDEX
- 02. Block Diagram
- 03. System Power
- 04. USB OTG/HUB
- 05. DDR3
- 06. Flash/TF card
- 07. GPIO
- 08. HDMI
- 09. LVDS
- 10. Camera/TP
- 11. RK1000_S
- 12. RMI1_100M

PCB POWER WIRE WIDTH INDICATE



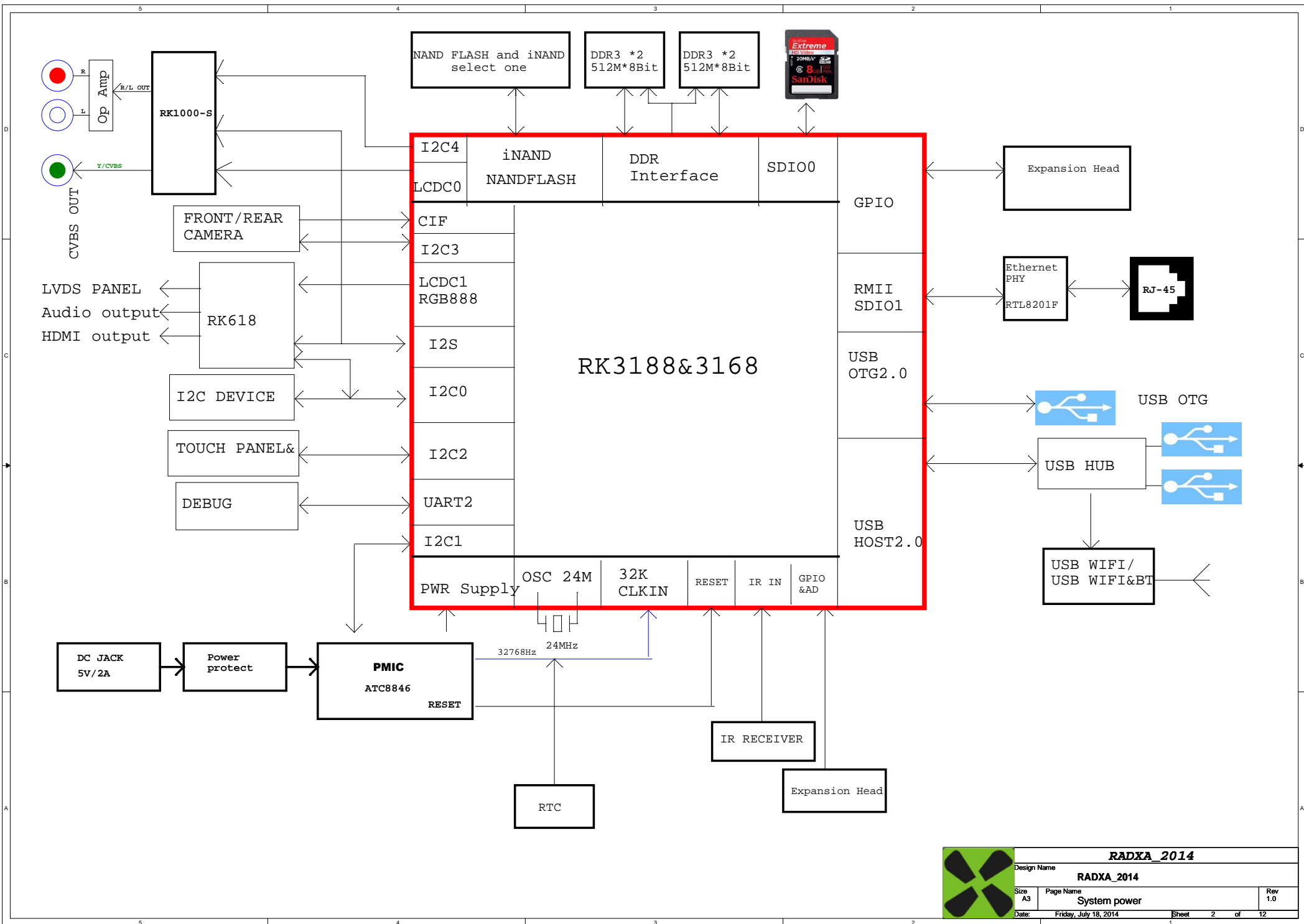
- above 80 miles
- above 50 miles
- above 30 miles
- above 16 miles
- Under needs

6 LAYERS PCB STACK

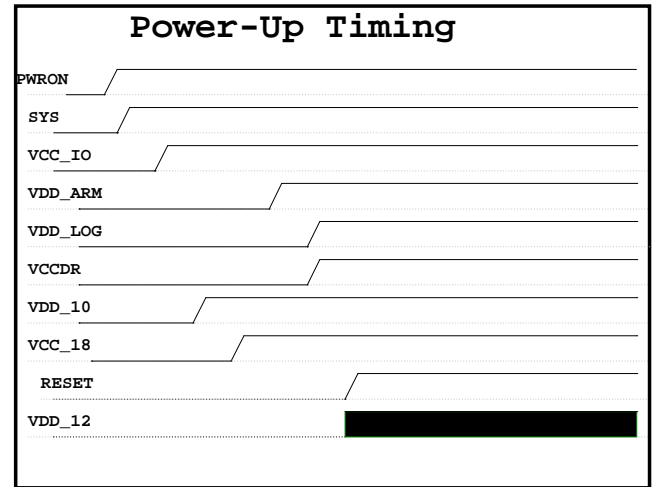
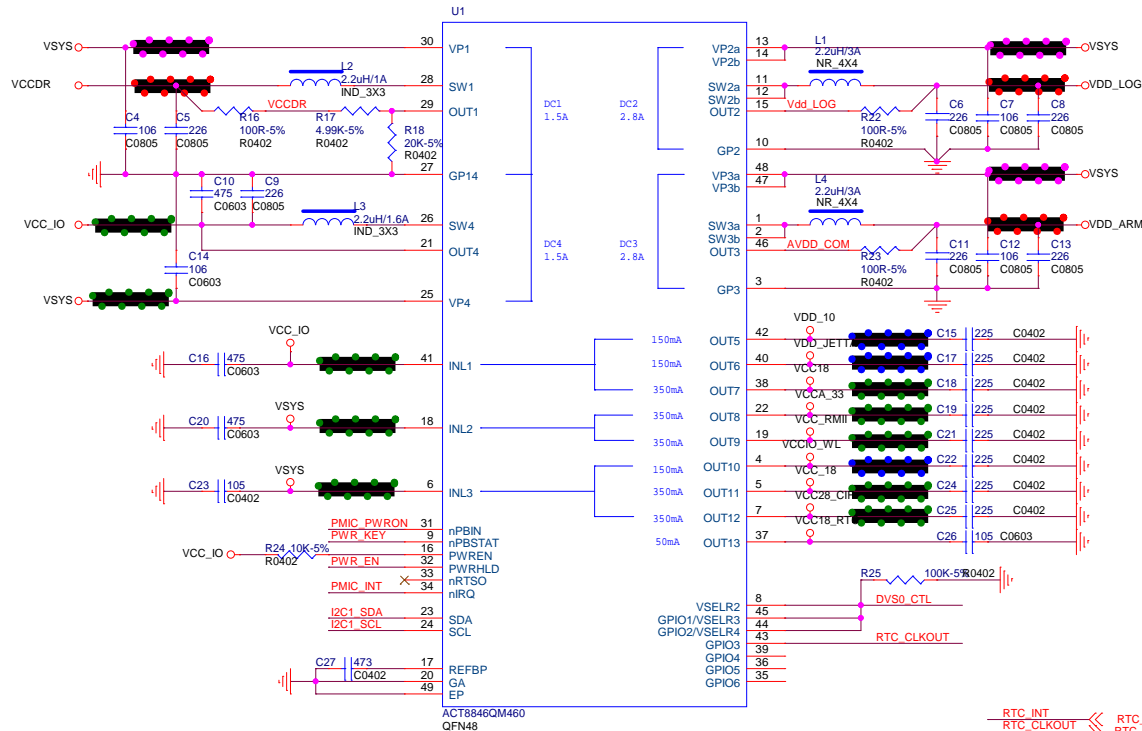
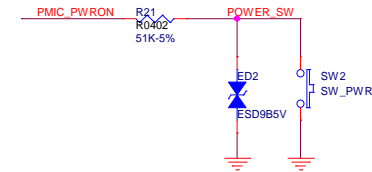
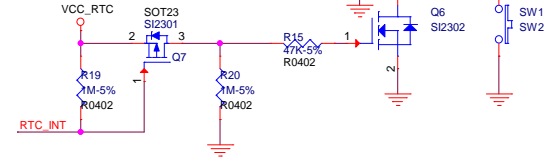
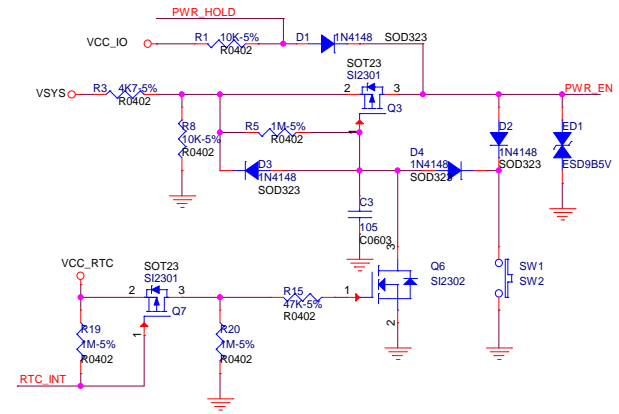
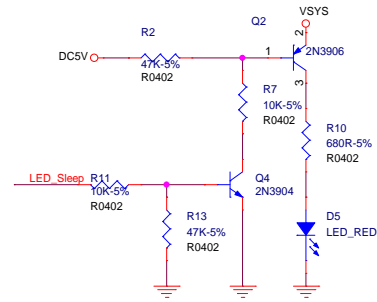
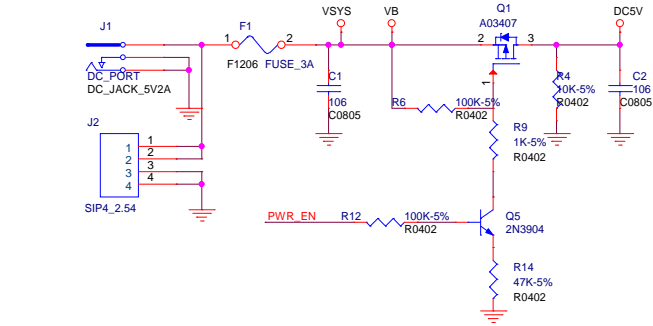
TOP	Prepreg 3313*1 4.0MIL(0.10mm)	Hoz(18um) + plating copper(18um)
GND	Core 3.94MIL(0.1mm)	1oz(35um)
POWER(S1)	Adjust	1oz(35um)
S1(S2)	Core 3.94MIL(0.1mm)	1oz(35um)
GND(POWER)	Prepreg 3313*1 4.0MIL(0.10mm)	1oz(35um)
S2(BOTTOM)	Prepreg 3313*1 4.0MIL(0.10mm)	Hoz(18um) + plating copper(18um)



RADXA_2014			
Design Name		RADXA_2014	
Size	Page Name	Rev	
A3	CONTENT INDEXING	1.0	
Date:	Friday, July 18, 2014	Sheet	1 of 12

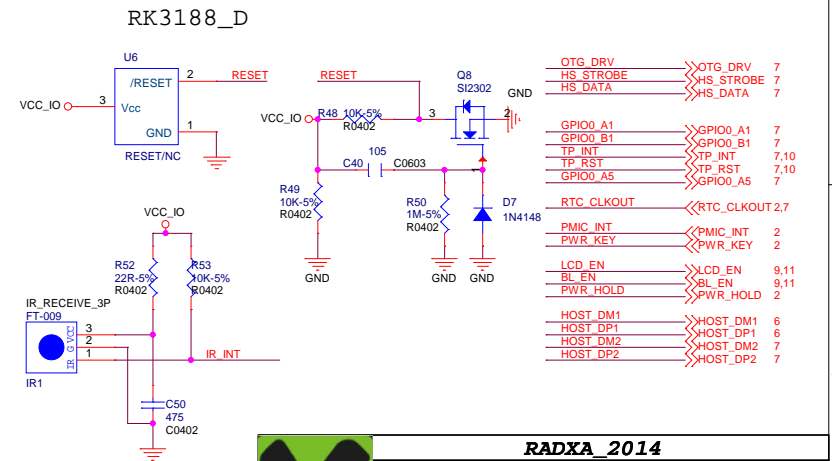
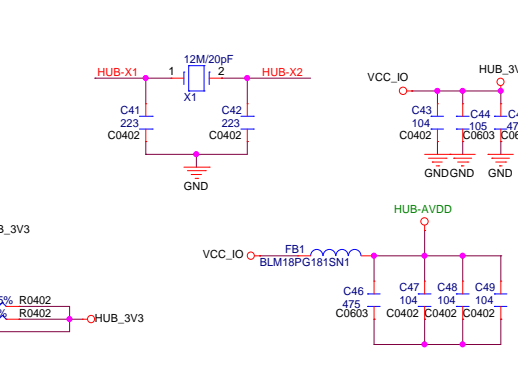
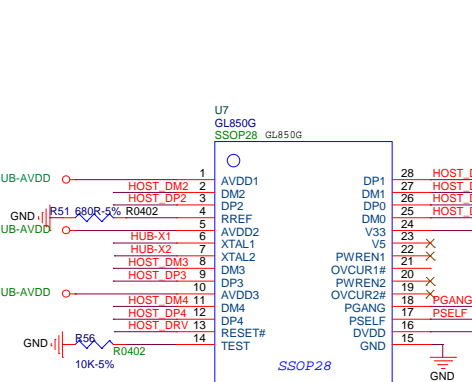
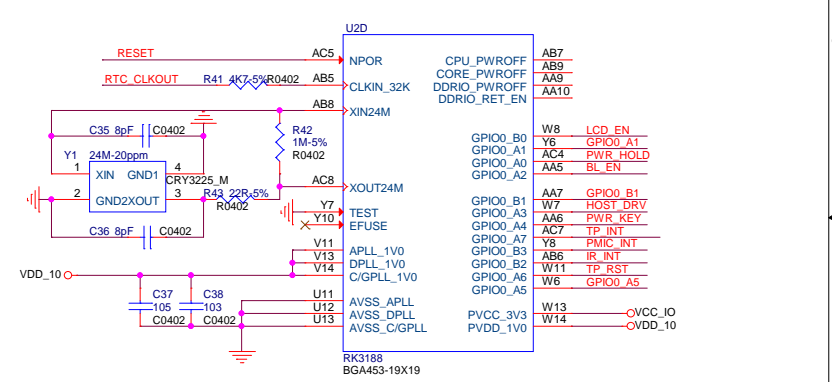
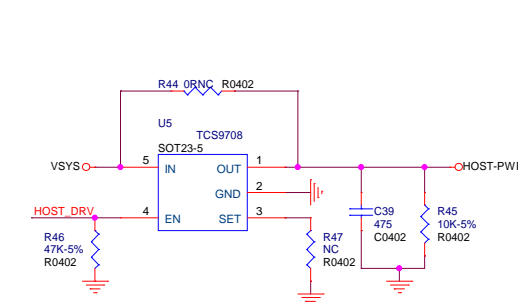
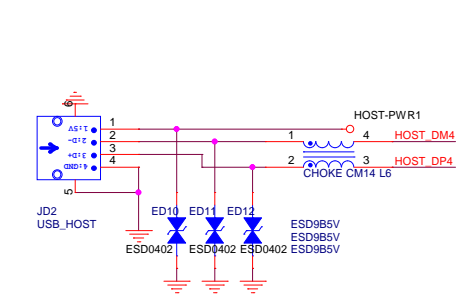
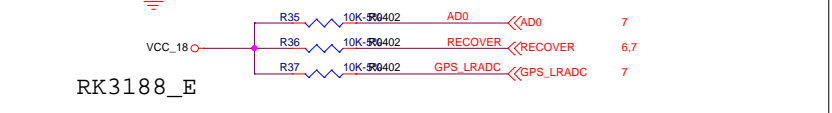
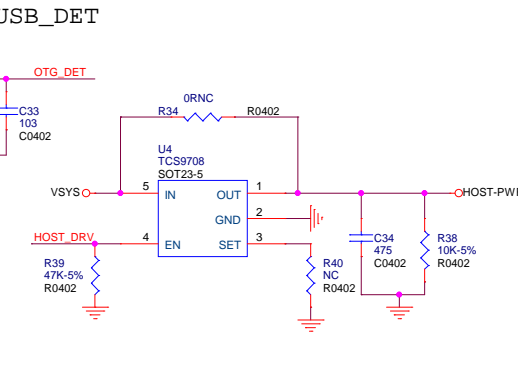
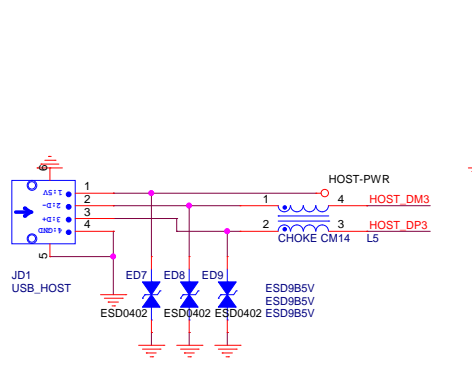
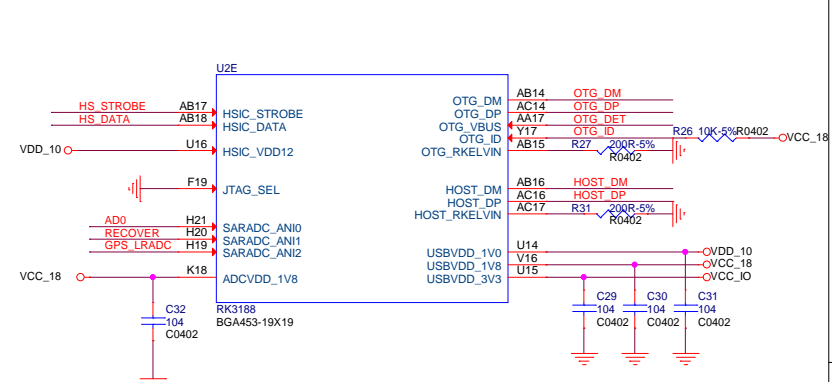
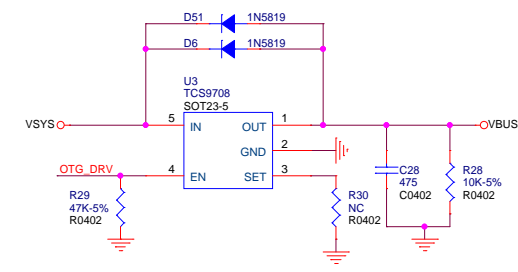
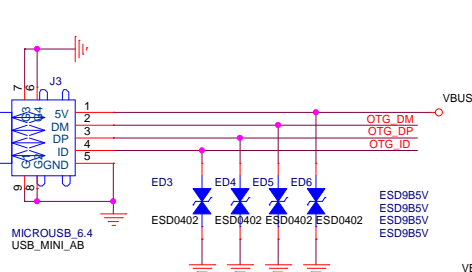


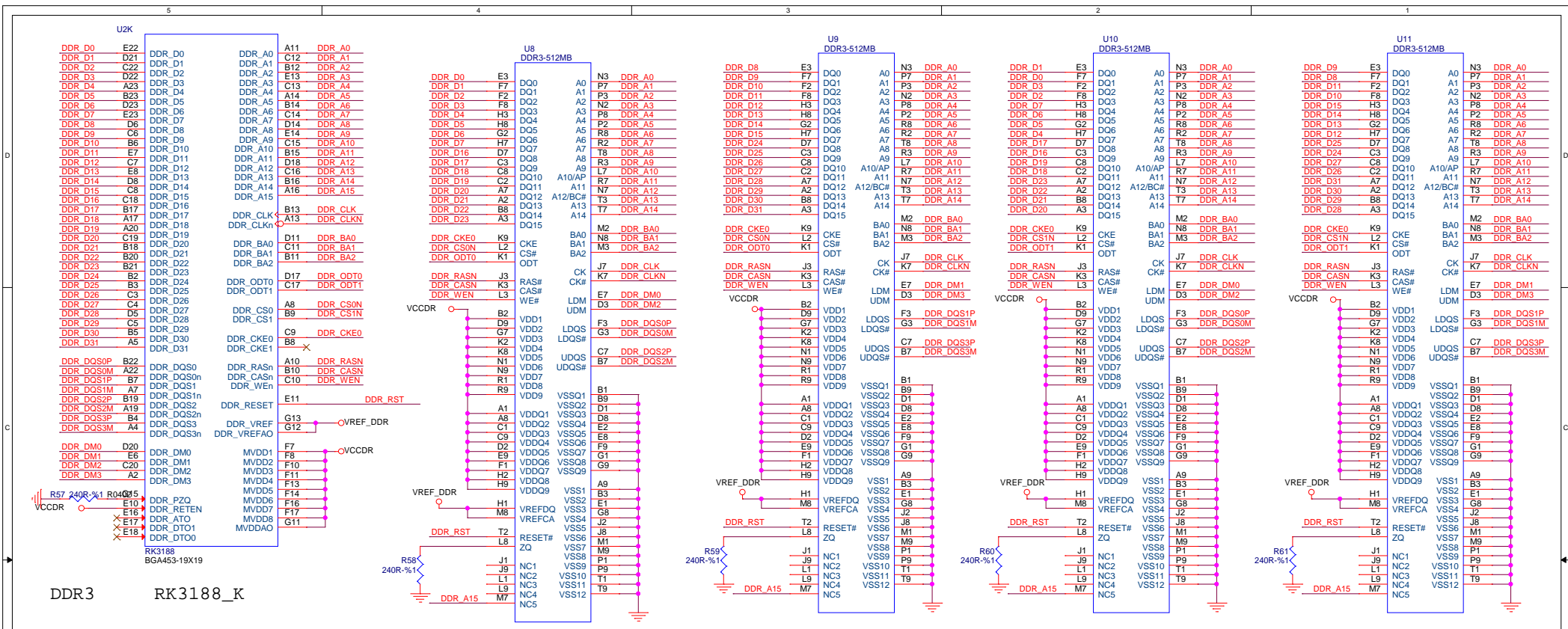
DC 5V/3A IN

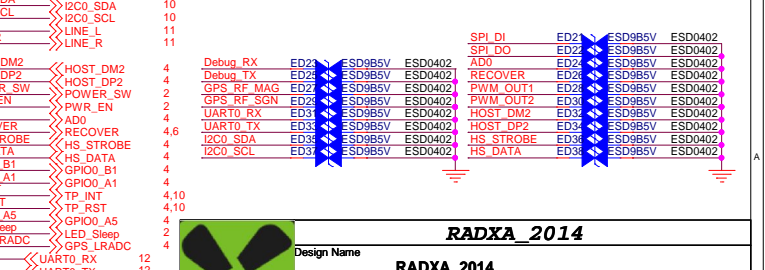
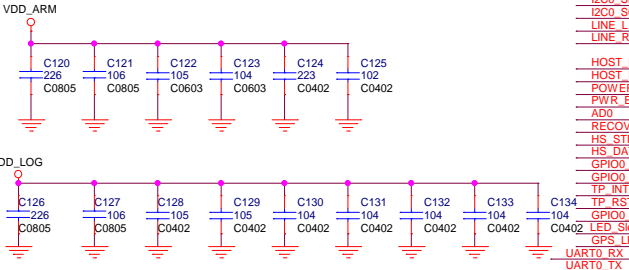
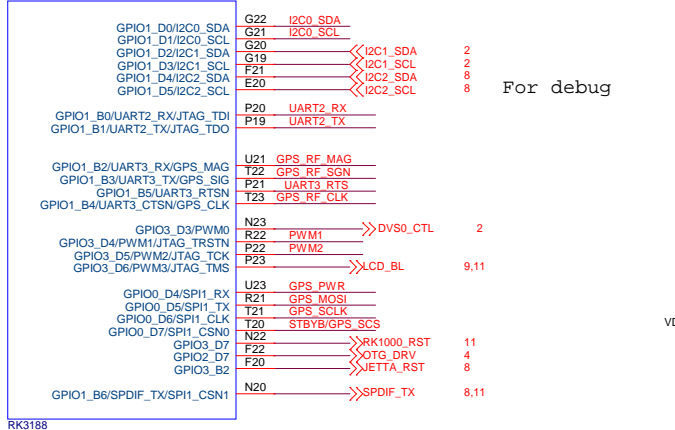
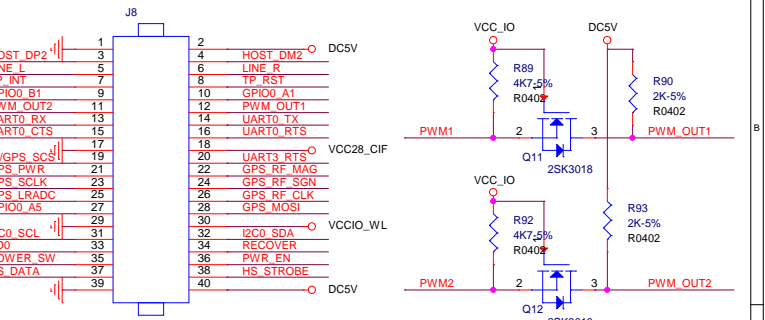
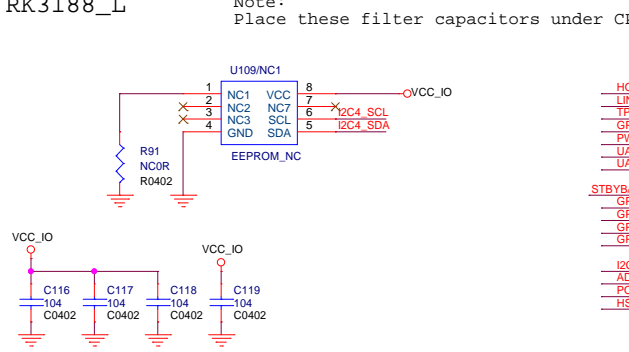
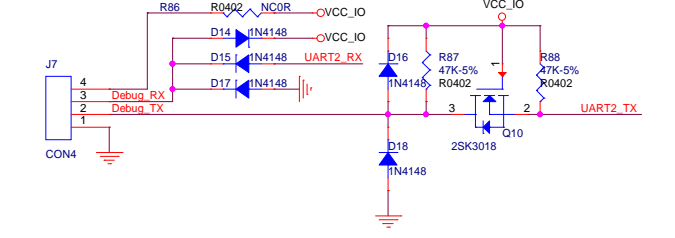
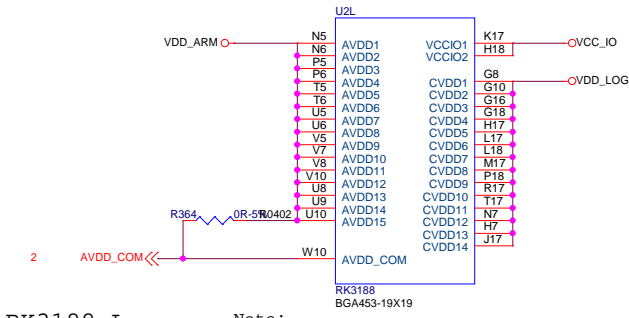
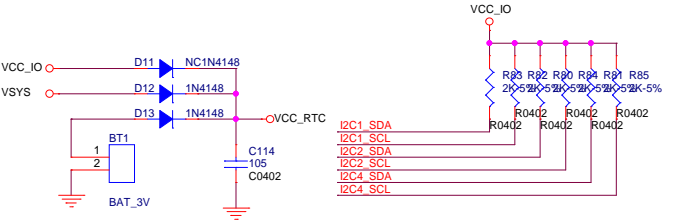
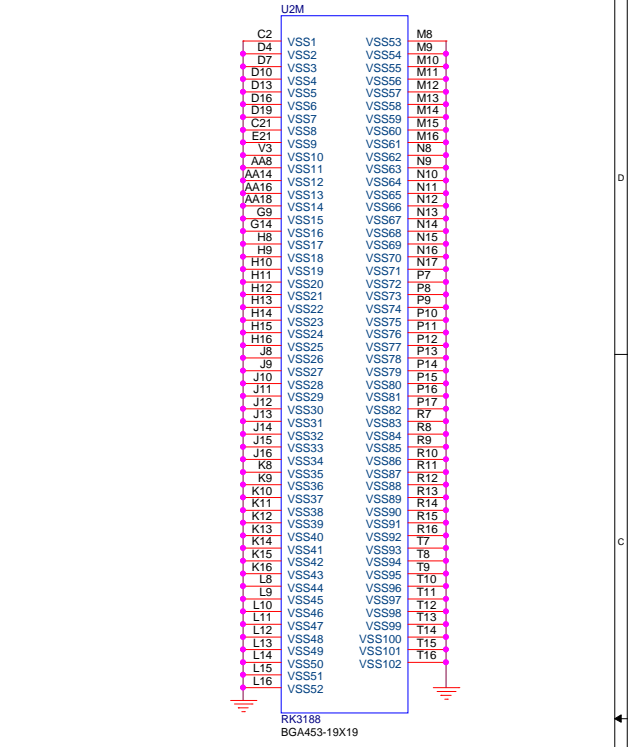
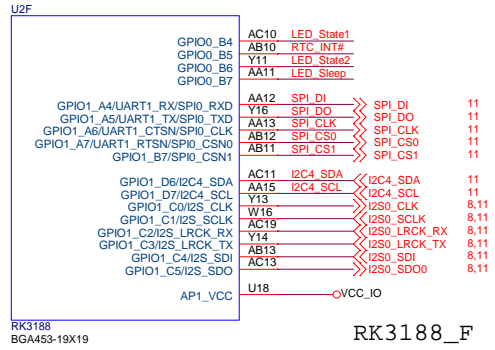
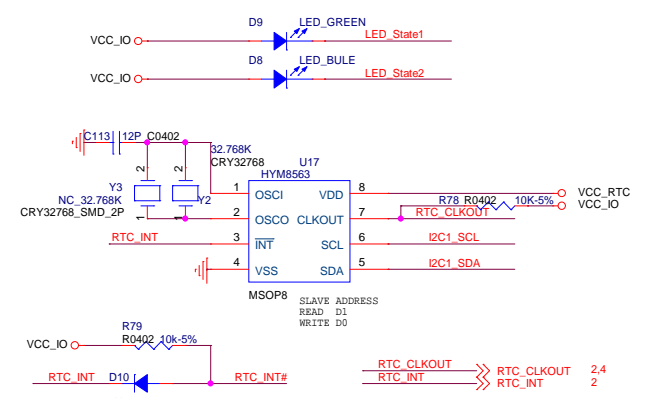


RTC_INT	RTC_INT	7
RTC_CLKOUT	RTC_CLKOUT	4,7
PMIC_INT	PMIC_INT	4
LED_Sleep	LED_Sleep	7
POWER_SW	POWER_SW	7
PWR_EN	PWR_EN	7
AVDD_COM	AVDD_COM	7
PWR_HOLD	PWR_HOLD	4
PWR_KEY	PWR_KEY	7
DVSO_CTL	DVSO_CTL	7
I2C1_SDA	I2C1_SDA	7
I2C1_SCL	I2C1_SCL	7









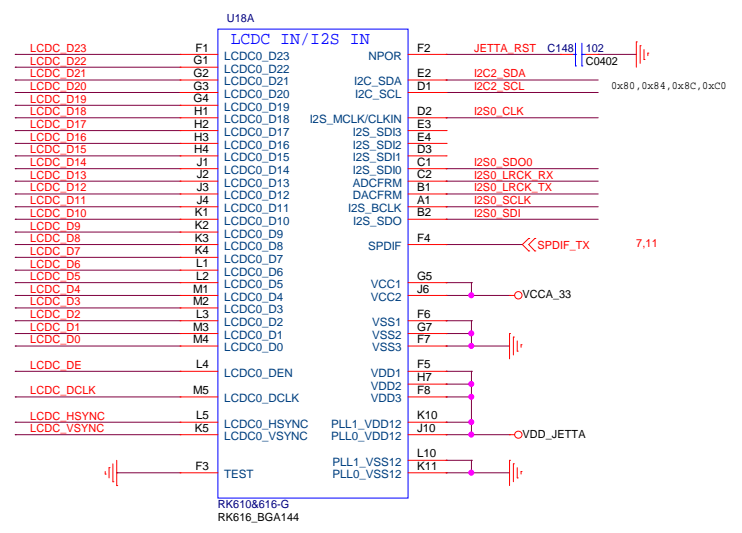
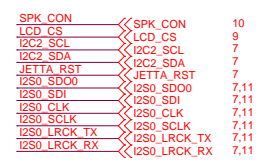
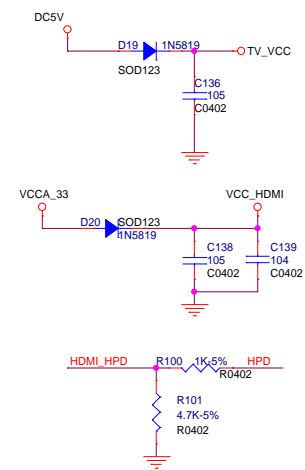
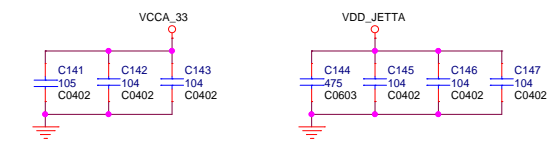
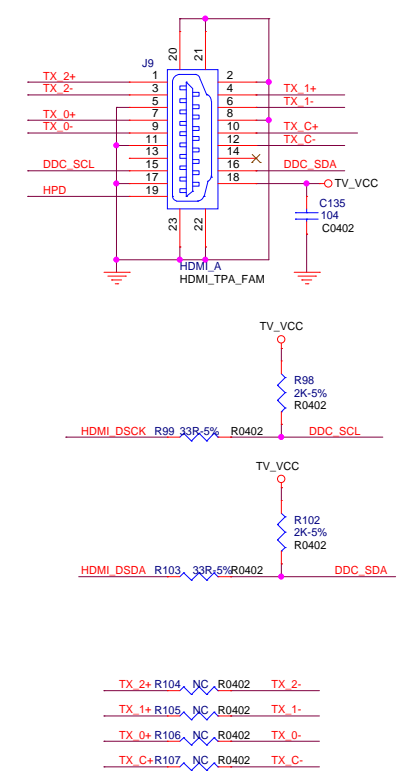
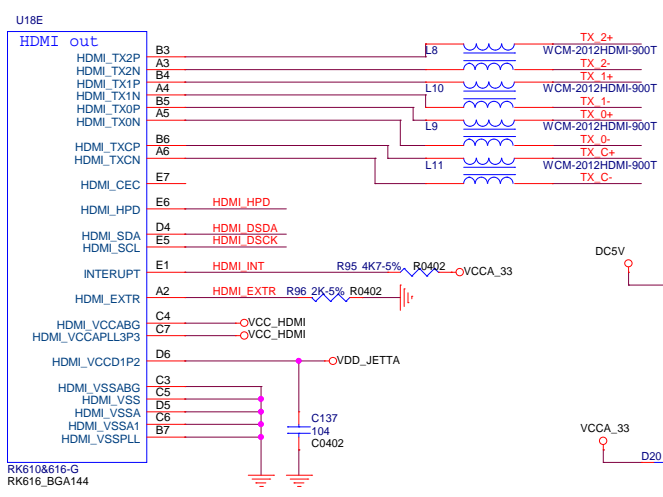
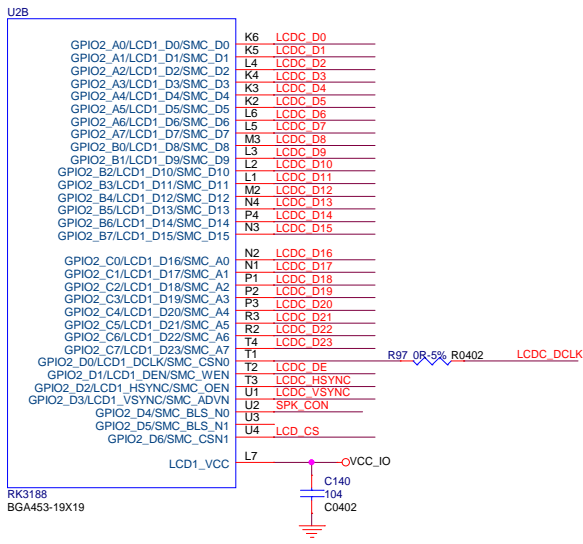
RK3188 CORE POWER FILTER

RADXA 2014

Design Name: **RADXA_2014**

Size: A3 | Page Name: **GPIO** | Rev: 1.0

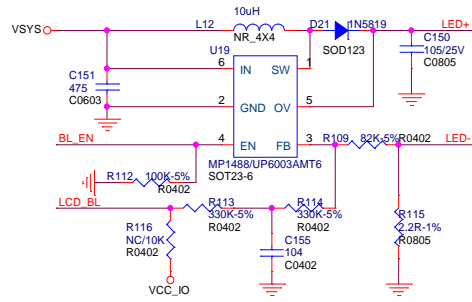
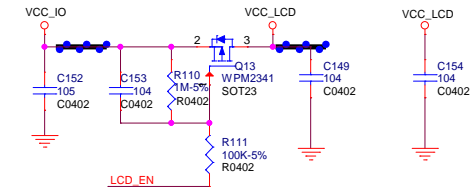
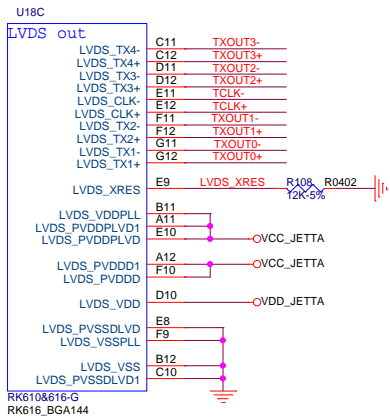
Date: Friday, July 18, 2014 | Sheet: 7 of 12



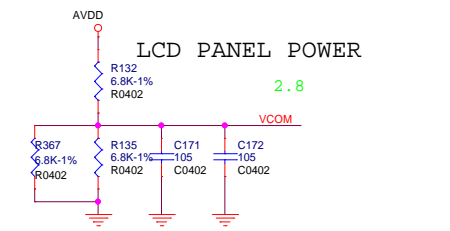
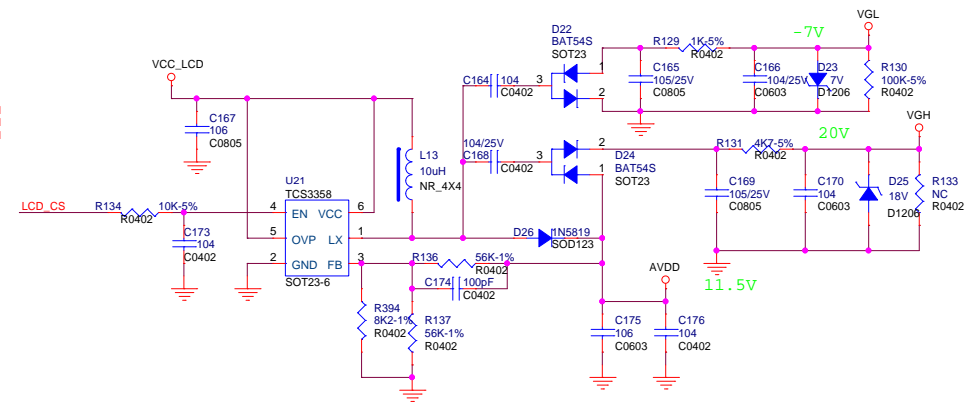
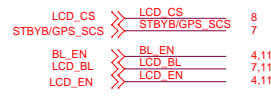
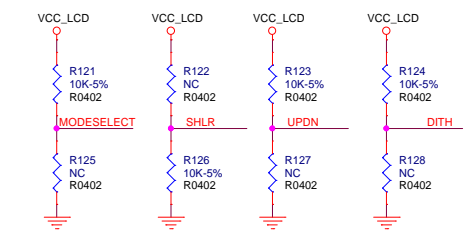
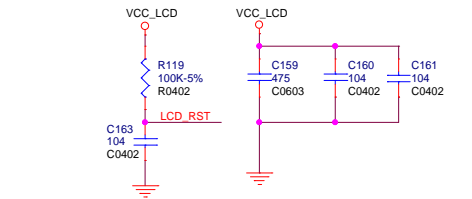
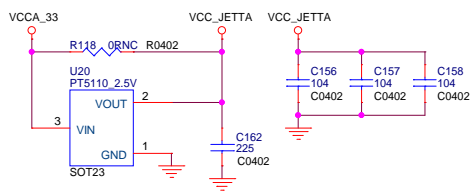
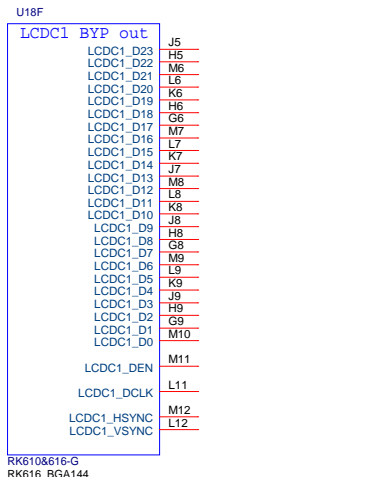
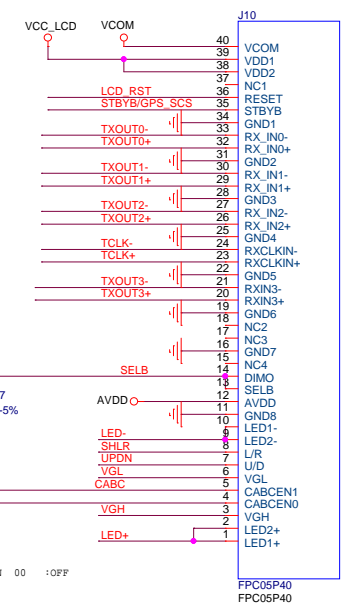
Correspondence between LCDC DATA and RGB

LCDC_D0	B0	LCDC_D12	G4
LCDC_D1	B1	LCDC_D13	G5
LCDC_D2	B2	LCDC_D14	G6
LCDC_D3	B3	LCDC_D15	G7
LCDC_D4	B4	LCDC_D16	R0
LCDC_D5	B5	LCDC_D17	R1
LCDC_D6	B6	LCDC_D18	R2
LCDC_D7	B7	LCDC_D19	R3
LCDC_D8	G0	LCDC_D20	R4
LCDC_D9	G1	LCDC_D21	R5
LCDC_D10	G2	LCDC_D22	R6
LCDC_D11	G3	LCDC_D23	R7

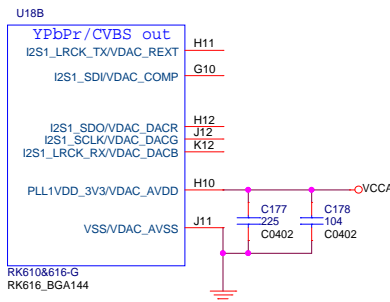




MP1488 FB=104mV
UP6003 FB=300mV



NOTE:
800*480的屏R219 56K, 此时电压4.1V;
1024*600的屏R219贴68K, 此时电压3.6V.



RK616 R163:0R ; RK616 R164:0R ;C31:0.1uF

Design Name			
RADXA_2014			
Size	Page Name	Rev	
A3	LVDS	1.0	
Date:	Friday, July 18, 2014	Sheet	9 of 12

